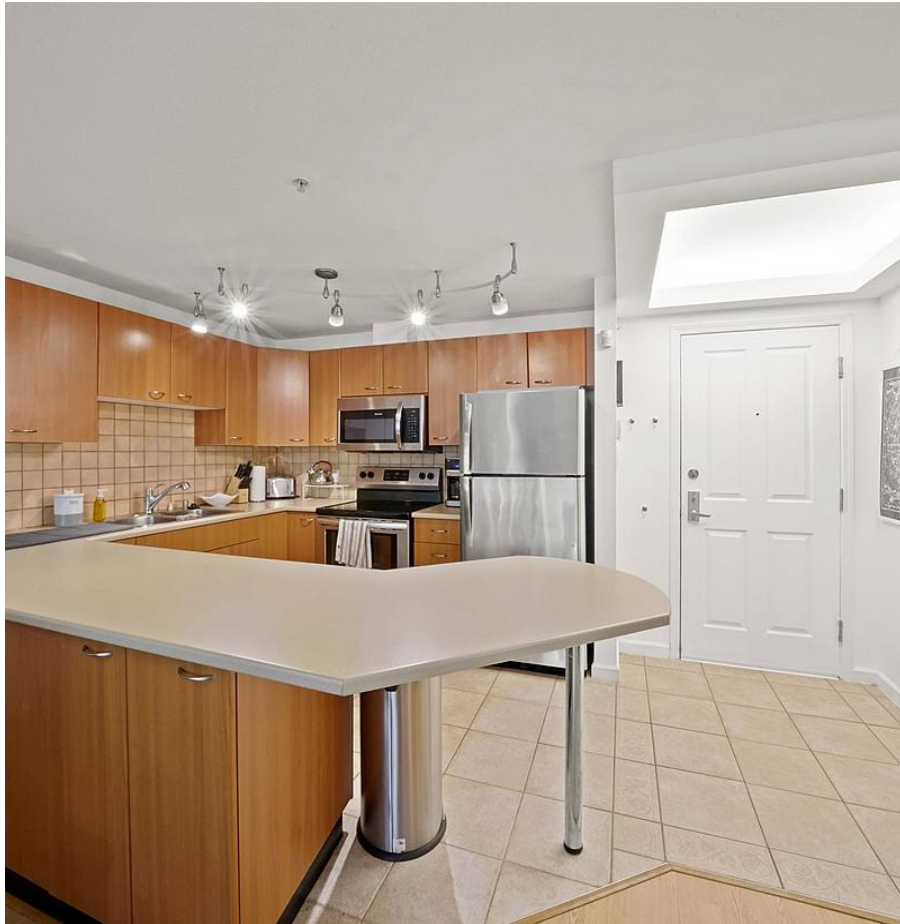


A301 2099 Lougheed Highway, Port Coquitlam

\$499,800



CONCRETE & STEEL CONSTRUCTION! This naturally bright TOP FLOOR SUITE at Shaughnessy Square has an open plan featuring fully equipped kitchen w/BREAKFAST BAR, s/s appliances, tile backsplash. Living/dining area has GAS FIREPLACE (incl in maintenance fee) & direct access to COVERED BBQ PATIO, perfect for wine or watching the sunset. Bedroom is KING SIZE FRIENDLY, has 2nd access to patio, large double closets & cheater door to full 4pc bathroom. BONUSSES INCLUDE: in-suite laundry, 2 dogs allowed (no size/breed restrictions), concrete/steel construction = less noise transfer than traditional wood frame, 2 PARKING SPOTS, STORAGE LOCKER, exercise centre. WALK TO: various parks + the Coquitlam River, Shaughnessy Station Mall, Westcoast Express, transit stops, schools of all levels.

KEY INFORMATION

MLS® R2700241

Residential Attached

Glenwood

1 Bedroom

1 Bathroom

732 SF

\$296.02 Maintenance Fees

FEATURES

Year Built: 2002

Views: Park View

Listed By: Keller Williams Elite Realty

