

36526 E Auguston Parkway, Abbotsford

\$1,349,900



Large East Abbotsford (Auguston) home (3,570 SqFt) on GREENBELT with an IN-LAW SUITE and within walking distance to Auguston Traditional School. Built by prestigious Bentley Homes, this home features an upgraded high-efficiency furnace, CENTRAL AIR CONDITIONER and a newer hot water tank. The main floor has a large GOURMET KITCHEN with granite countertops and high-end appliances. The living room has the Bentley Built Entertainment Unit. The upstairs has 3 bedrooms inc. the OVERSIZED MASTER with huge 5 pc ensuite and walk-in closet. In the basement is a full kitchen with newer appliances, a bedroom and a lot more space. The property features an inground sprinkler system. The backyard is fully fenced, backs onto the green space and you can walk to world-class levels of hiking and biking trail

KEY INFORMATION

MLS® R2700114

Residential Detached

Abbotsford East

4 Bedrooms

4 Bathrooms

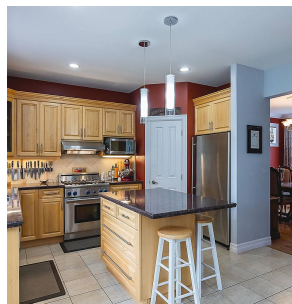
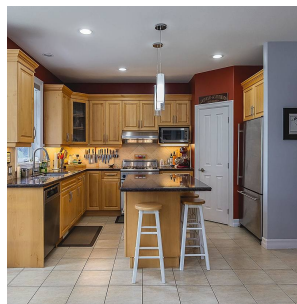
3,570 SF

6,027 SF Lot

FEATURES

Year Built: 2004

Listed By: Homelife Advantage Realty (Central Valley) Ltd.



rennie