

508 1425 W 6th Avenue, Vancouver

\$1,149,000



This is the one! Highly sought after 2 bed/den/2 bath at Modena. A Portico building by BOSA. Located at the gateway to Vancouver's downtown core. Steps from Granville Island, galleries, restaurants, shopping. This is the perfect home you can enjoy the convenience on a tree lined street with ample green spaces next door. Units comes with a gourmet kitchen with Bertazzoni gas range, hardwood flooring, new carpets, and gas fireplace. Building amenities include large fitness centre, complete workshop, sauna, hot tub, steam room, bike storage, and club room. Near by schools: Family Montessori School Society, False Creek Elementary; French Immersion L'ecole Bilingue and Lord Tennyson. Unit includes 2 side by side parking and 1 huge storage .

KEY INFORMATION

MLS® R2700879

Residential Attached

False Creek

2 Bedrooms

2 Bathrooms

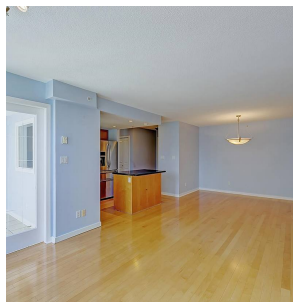
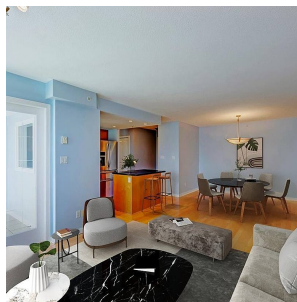
983 SF

\$493.89 Maintenance Fees

FEATURES

Year Built: 2000

Listed By: Sutton Group - 1st West Realty



rennie