

# 33 16511 Watson Drive, Surrey

\$999,000



Welcome to this Sensational Executive townhome in the prestigious "Fleetwood Point. This modern west coast townhome includes 3 bedrooms, 3 baths with an additional flex room. Large windows fill the home with natural light. Kitchen comes fully equip with with stainless steel appliances, quartz countertops, acrylic cabinets and spacious walk-in pantry. Spacious Living room features a fireplace, AC. Large rooftop patio the perfect place to entertain. Double parking garage. Walking distance to schools, shopping, parks and future sky train. Open House June 18 and June 19, 2 to 4pm.

## KEY INFORMATION

MLS® R2700594

Residential Attached

Fleetwood Tynehead

3 Bedrooms

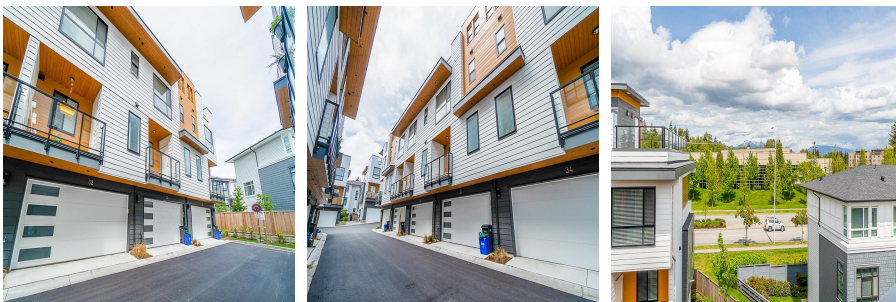
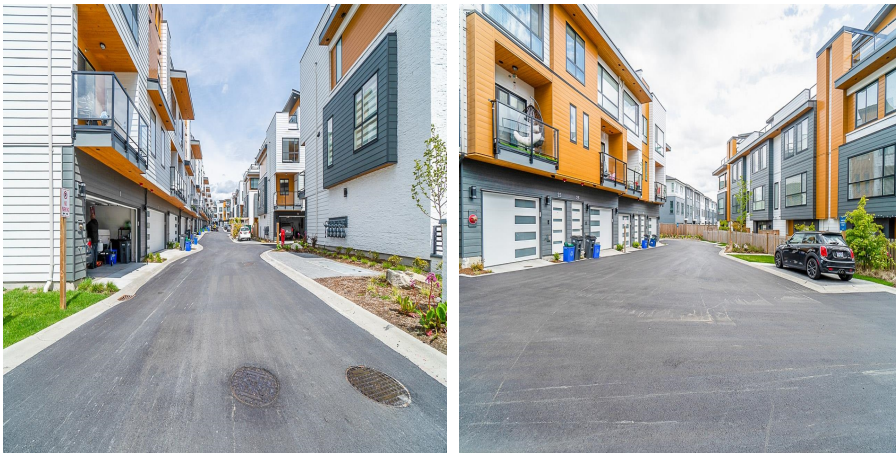
3 Bathrooms

1,592 SF

## FEATURES

Year Built: 2021

Listed By: Sutton Group-Alliance R.E.S.



rennie