

# 407 33530 Mayfair Avenue, Abbotsford

\$650,000



Immerse yourself in this immaculate 1,235 sq.ft.\* 3 bedroom, 2.5 bath 4th floor home located in the highly sought after: The Residences at Gateway. Built in 2018, the state of this home still feels like new and includes two parking stalls and a massive storage locker. Rare opportunity to own a large home in the sky that boasts a Southeast orientation with morning sun, mountain views, and views over the project's Italian inspired courtyard. Added luxurious are walk-in laundry room, A/C in all three bedrooms, gas Italian Bertazzoni range + hook-up on the balcony. Do not miss out on the opportunity to only live minutes away from Abbotsford's largest amenities and luxurious. Book your tour today, you will not be disappointed!

## KEY INFORMATION

MLS® R2700464

Residential Attached

Central Abbotsford

3 Bedrooms

3 Bathrooms

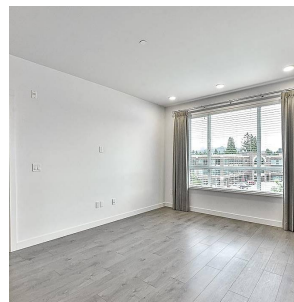
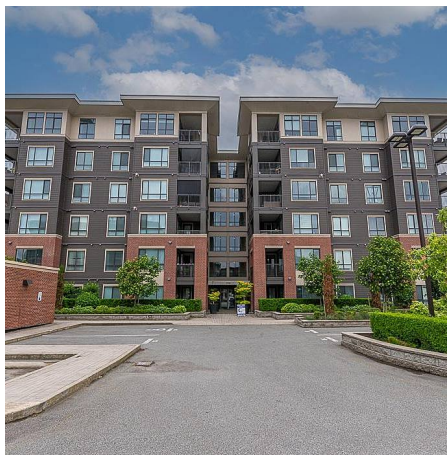
1,235 SF

\$398.68 Maintenance Fees

## FEATURES

Year Built: 2018

Listed By: eXp Realty (Branch)



rennie