

411 707 Como Lake Avenue, Coquitlam

\$779,900



STUNNING views of SFU from this very efficient, AIR-CONDITIONED 2 bed + 2 bath CORNER suite at DUET BY ADERA, built with Adera's SmartWood® technology consisting of Cross-Laminated Timber & QuietHome™. Located in the expanding community of West Coquitlam, just a short walk to Burquitlam SkyTrain station; This virtually brand new home features 2 bedrooms on opposite ends, a chef inspired kitchen w/ a large island, pantry, full-size Whirlpool washer+dryer and soaring NINE FOOT CEILINGS. AC WAS INSTALLED BY THE DEVELOPER! A functional amenities package including a Rooftop Community Patio with a Barbeque and AMAZING views, a Party Room and Gym. 1 EV ready PARKING and TWO SIDE BY SIDE STORAGE!

KEY INFORMATION

MLS® R2701509

Residential Attached

Coquitlam West

2 Bedrooms

2 Bathrooms

877 SF

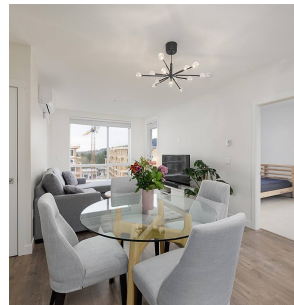
\$483.17 Maintenance Fees

FEATURES

Year Built: 2020

Views: SFU, MOUNTAINS, CITY & VIEWS

Listed By: rennie & associates realty ltd.



Matthew Lee
778.882.2673
mlee@rennie.com
rennie.com/matthewlee

rennie