

# 622 289 E 6th Avenue, Vancouver

\$739,000



Welcome home to the highly sought after CONCRETE building SHINE! Located in Mount Pleasant within walking distance to restaurants and shops, this Sub-Penthouse level 1 bedroom home in Mount Pleasant provides expansive north facing views of the Northshore Mountains! Smartly laid out with the bedroom and along the hallway, leading to the open Kitchen, Dining and spacious Living areas. North Facing balcony right above the common garden area provides an exceptional view and light. Contemporary decor includes birch laminate flooring, quartz countertops, high gloss white cabinetry, large centre island & bar area, and floor to ceiling windows. A perfect pantry space is neatly tucked away next to the dining area as well. Amenities include a full gym, bike room & rooftop patios. 1 parking 1 locker.

## KEY INFORMATION

MLS® R2702289

Residential Attached

Mount Pleasant

1 Bedroom

1 Bathroom

555 SF

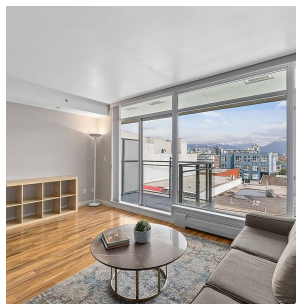
\$302.42 Maintenance Fees

## FEATURES

Year Built: 2015

Views: Beautiful Mountain Views

Listed By: RE/MAX Select Properties



rennie