

# 2803 4888 Brentwood Drive, Burnaby

\$910,000



Stunning mountain and city views! Excellent location. Minutes from Brentwood Mall, Costco, Home Depot, Winners and sky train. 15 minutes drive to Downtown Vancouver and Simon Fraser University. Walking distance to catchment schools: Brentwood Park Elementary, Alpha Secondary school. Two underground parking stalls:36,37. Convenient two separate entry gate. Locker: 197. Floor to ceiling windows. Gourmet kitchen with stainless steel appliances, granite countertops. Solid cabinets provide ample storage space. Very well maintained. Enjoy life here or take as an investment opportunity!

## KEY INFORMATION

MLS® R2702314

Residential Attached

Brentwood Park

2 Bedrooms

2 Bathrooms

1,035 SF

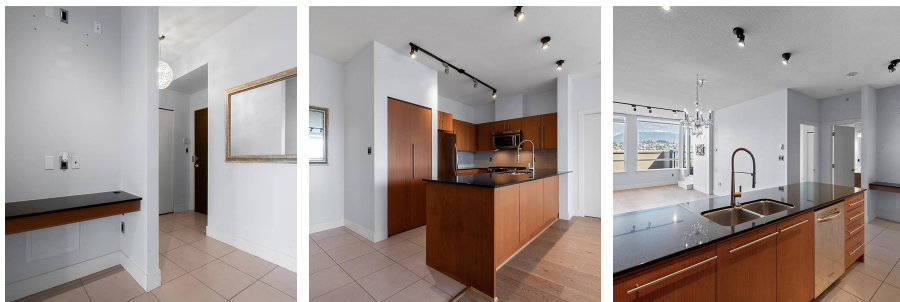
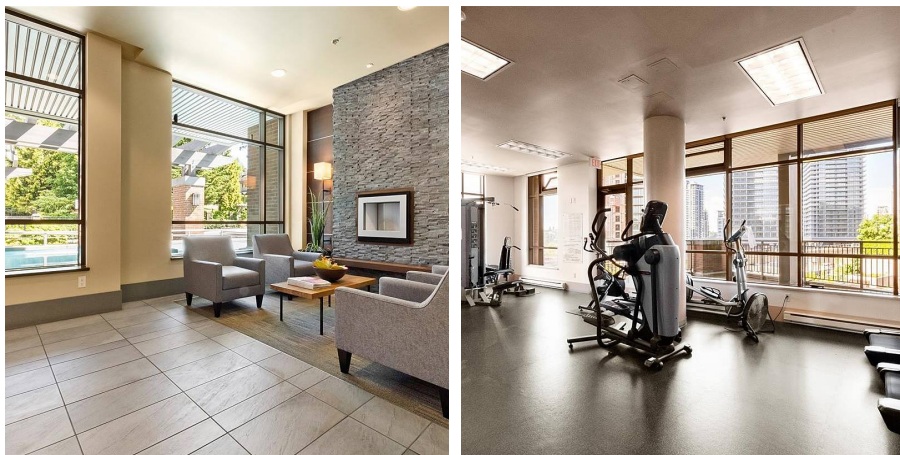
\$483.69 Maintenance Fees

## FEATURES

Year Built: 2008

Views: gorgeous mountain and city

Listed By: Sutton Centre Realty



rennie