

559 Blitz Road, Mayne Island

\$799,000



Nestled in amongst the evergreens on a level .34 acres that is completely fenced for family, pets and privacy. The 1395 s/f rancher bungalow offers an open dining and living space with cozy wood fireplace insert, separate den or hobby room that exits to the private back deck. Galley kitchen with adjacent laundry/boot room, 2 bedrooms, 3 pce bathroom and ensuite with clawfoot tub. An expansive deck off the dining area overlooking the gardens and green space. Separate workshop with cold storage and a 280 s/f detached sleeping cabin/studio space kept warm by the free standing gas stove, attached carport and multiple storage sheds. This property is well set up for the outdoor enthusiast, easy walking and biking area, close to Bennett Bay beach access for kayak launching and the National Park.

KEY INFORMATION

MLS® R2702075

Residential Detached

Mayne Island

2 Bedrooms

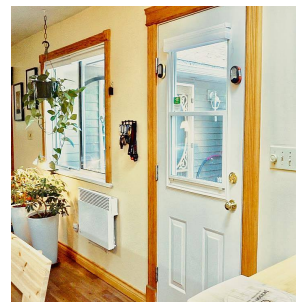
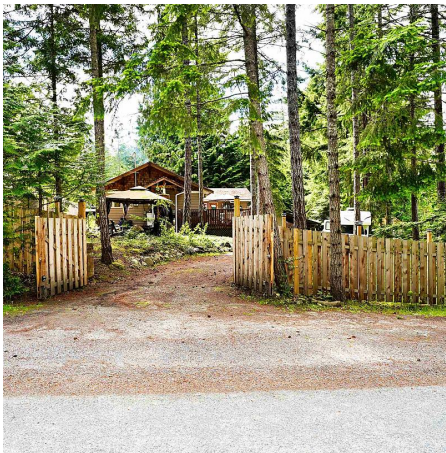
2 Bathrooms

1,395 SF

FEATURES

Year Built: 1992

Listed By: Gulfport Realty



rennie