

701 13438 Central Avenue, Surrey

\$349,000



Unbeatable price \$349K for a 401 SqFt high-rise concrete condo unit with 1 parking stall & storage locker at excellent location! Just steps away from Surrey Central Skytrain, SFU & KPU Surrey, Library, T&T supermarket, Central City Shopping Centre, restaurants & more. This Micro-Two design unit can be converted into 2 micro rooms, and the 2 good size murphy beds can be converted into Table & Sofa. Open Floor Plan with stainless steel appliances, wood flooring throughout. Great amenities: fully equipped gym, yoga studio, massage room, sauna & steam room, business centre, concierge services, lounges with kitchen, study & music rooms, roof top garden with playground. Hurry up! Don't miss this great opportunity. Open House by appointment on June 26, Sunday 2 to 4pm. Review Offers as they come.

KEY INFORMATION

MLS® R2702843

Residential Attached

Whalley

0 Bedrooms

1 Bathroom

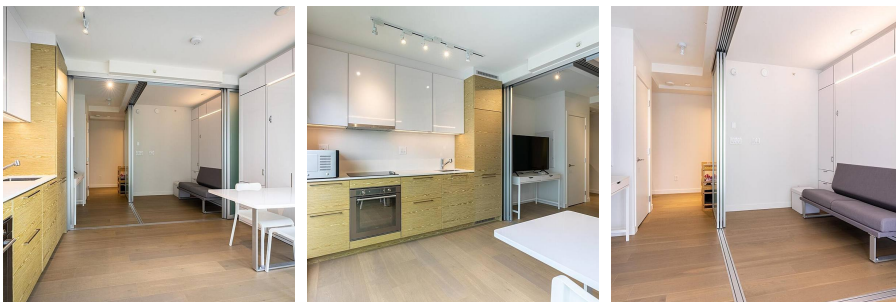
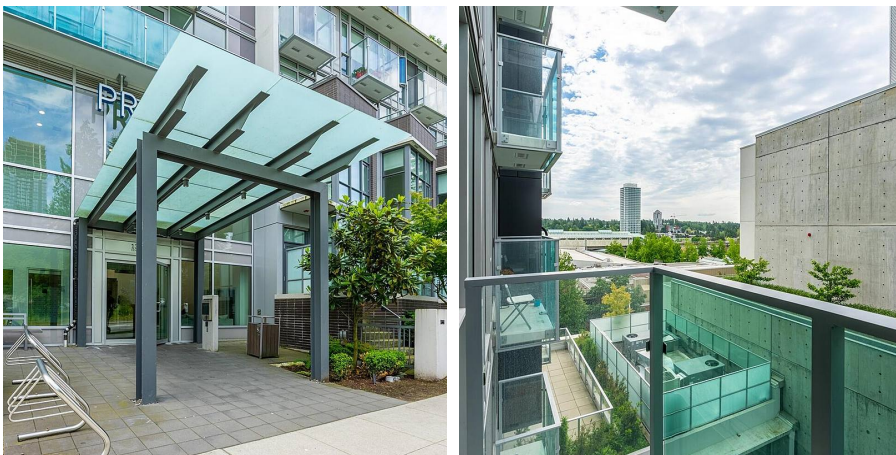
401 SF

\$224.80 Maintenance Fees

FEATURES

Year Built: 2019

Listed By: Sutton Group - 1st West Realty



rennie