

# 5466 Chaffey Avenue, Burnaby

\$1,799,000



Welcome home to 5466 Chaffey Ave! Centrally located & only 10 mins walk to METROTOWN, this 1,968 sq ft half DUPLEX feat 4 beds, 4 baths, open concept layout, over height 9' ceilings on the main, cozy gas fireplace, RADIANT FLOOR HEATING, & attached garage. ALL BRAND NEW oven/fridge/hood vent/toilets/various light fixtures/paint head to toe, & NEW hot water boiler in 2021. 1 Bed suite w/ own entrance is perfect for mortgage helper, & 3 Beds on the upper floor are all generous sized. Enjoy beautiful MOUNTAIN VIEWS from both your PRIVATE FENCED BACKYARD & enclosed balcony above. Nearby schools are Chaffey-Burke Elementary (3 mins walk) & highly ranked Moscrop Secondary.

## KEY INFORMATION

MLS® R2702902

Residential Attached

Central Park

4 Bedrooms

4 Bathrooms

1,968 SF

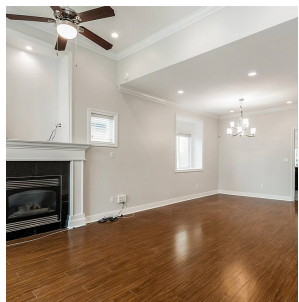
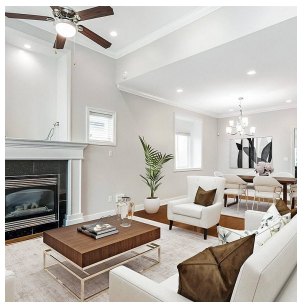
4,030 SF Lot

## FEATURES

Year Built: 2010

Views: City and Mountains!

Listed By: rennie & associates realty ltd.



**Eric Zamora** PREC\*  
778.389.4556  
ezamora@rennie.com  
rennie.com/ericzamora



**Shelly Vellani** PREC\*  
604.710.3681  
svellani@rennie.com  
rennie.com/shellyvellani

**rennie**