

870 Wellington Drive, North Vancouver

\$1,899,000



This traditional family home sits up off the street creating a very peaceful & private setting providing all day sunshine. The landscaped rear yard is private (ideal for children & pets) with a level lawn area plus beautiful gardens. The home & property are in immaculate move-in condition. Ideal plan for families with 4 bedrooms & 2 bathrooms up. The main level has a separate home office/den, powder room & kitchen with a cozy family room with a wood burning fireplace. The kitchen/family room over look & walk out level to the rear yard - perfect for young families. For entertaining, a large living room with 2nd wood burning fire place & a proper dining room. Close to Cousteau School, The French International School and Argyle Secondary School. YouTube Video: <https://youtu.be/x4DGf0GfbEU>

KEY INFORMATION

MLS® R2702996

Residential Detached

Princess Park

4 Bedrooms

3 Bathrooms

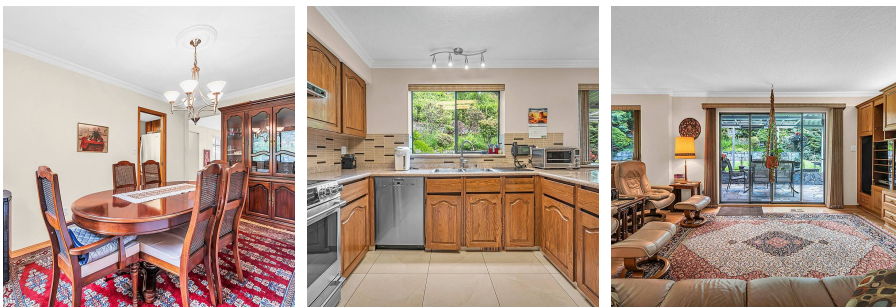
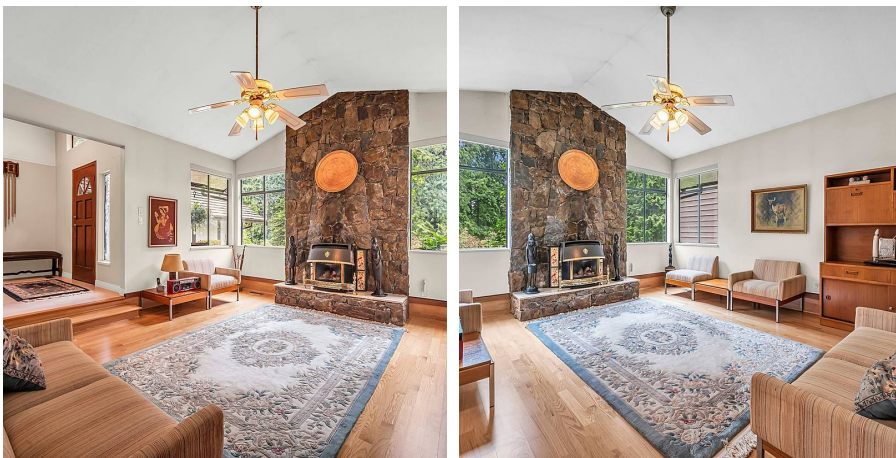
2,265 SF

8,751 SF Lot

FEATURES

Year Built: 1983

Listed By: Sutton Centre Realty



rennie