

6127 E Greenside Drive, Surrey

\$659,900



If you're in the market for a townhouse, Greenside Estates is a hidden gem (arguably the best value in the area!). It's located in a family friendly complex in Cloverdale, minutes from great schools, Willowbrook Mall, right on transit (and close to future Skytrain) with great amenities including an outdoor pool and basketball courts! This two bedroom END unit (with 2 parking right outside your door) has just been painted top to bottom, has a renovated white kitchen, vaulted shiplap ceilings in living room, and a large fenced backyard perfect for kids or pets. Ps, no size restrictions here, super rare for Strata! OPEN HOUSE Saturday July 2nd, 2:00pm - 4:00pm

KEY INFORMATION

MLS® R2703021

Residential Attached

Cloverdale

2 Bedrooms

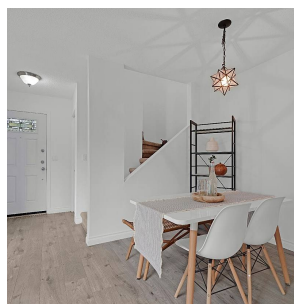
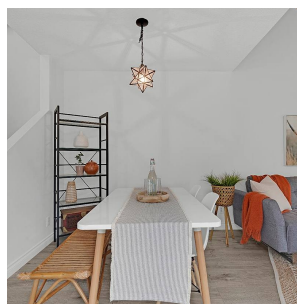
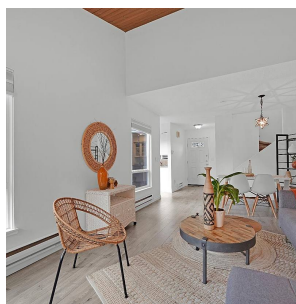
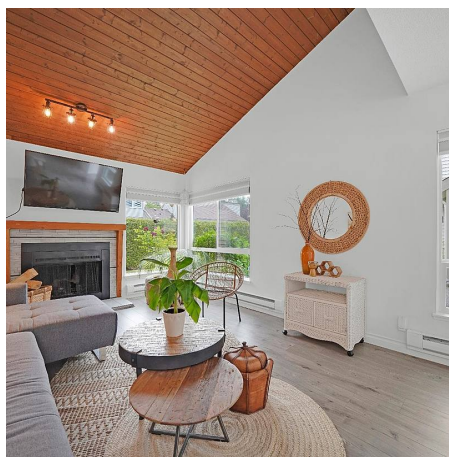
1 Bathroom

1,082 SF

FEATURES

Year Built: 1979

Listed By: RE/MAX Treeland Realty



rennie