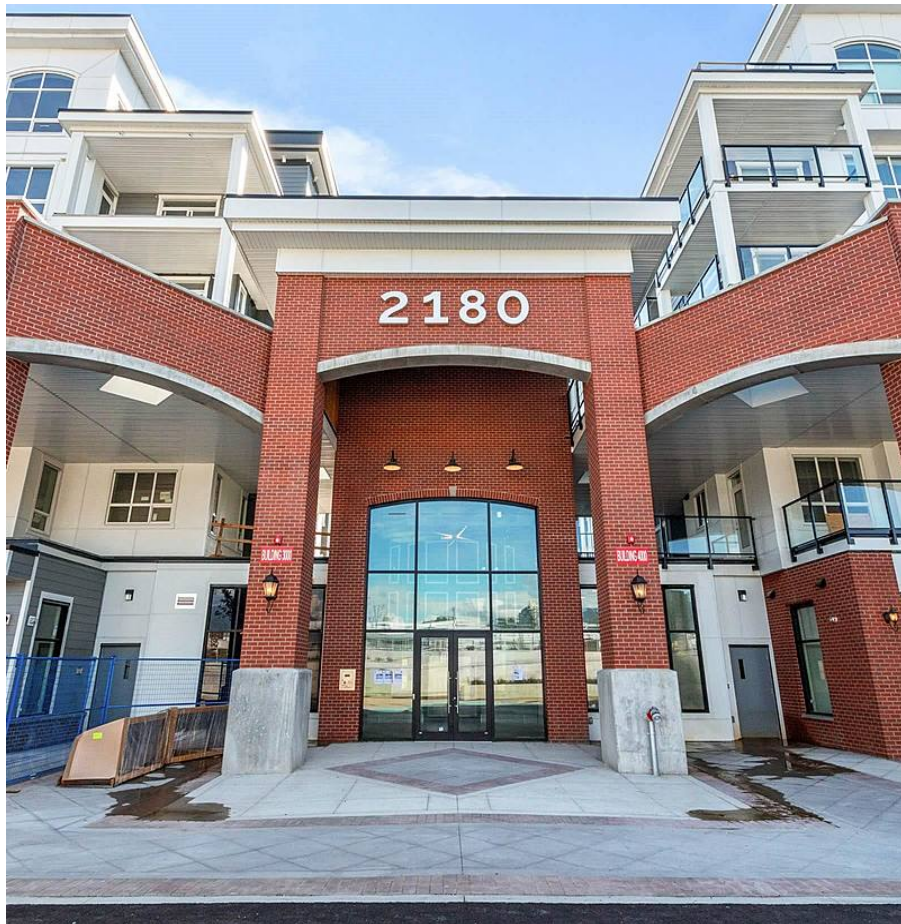


1404 2180 Kelly Avenue, Port Coquitlam

\$519,900



"Montrose Square" Downtown Port Coquitlam's newest and most convenient location. This "Brand New" luxury condo features all the modern conveniences. Gourmet kitchen with black Stainless Steel appliances & Quartz counter tops. Laminate & tile floor. Insuite laundry. Air conditioning! Large year round covered deck with panoramic east/northeast mountain views from Golden Ears to Mt. Baker. Ready for immediate occupancy. Quality building with New Home Warranty. Secure Parking, Storage (on same floor) and Bike room. Pets & rentals ok. New Poco Recreation centre, right across the courtyard. Pool, Ice rink, Library & Yoga. Only one block away from Westcoast express to Downtown Vancouver. Easy access to Skytrain. Walk to everything you need.

KEY INFORMATION

MLS® R2702988

Residential Attached

Central Port Coquitlam

1 Bedroom

1 Bathroom

521 SF

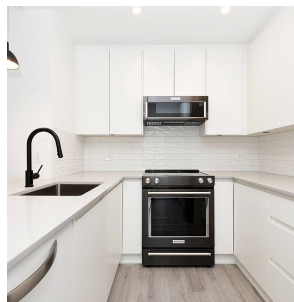
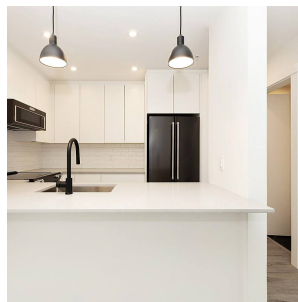
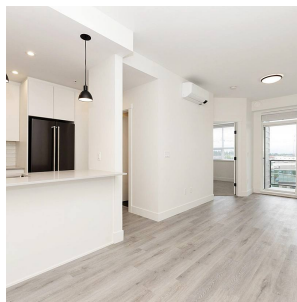
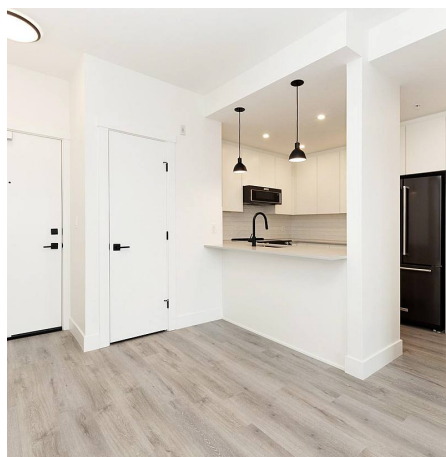
\$199.97 Maintenance Fees

FEATURES

Year Built: 2022

Views: MOUNTAIN VIEWS

Listed By: Royal LePage West Real Estate Services



rennie