

2107 9280 Salish Court, Burnaby

\$539,000



SUB PENTHOUSE with Panoramic Mountain Views!! This Gorgeous open concept 825 sq ft, One Bed And Den is just what you have been waiting for!! This home has a stunning kitchen with stainless steel appliances, quartz countertops, under-mount sinks, tile and laminate flooring throughout. The master bedroom will accommodate a king size suite & the den would be perfect for an office or child's room. Fantastic Location with steps away from access to the Skytrain, Lougheed Mall, shopping, fitness studios and cafes. Don't wait on this one, this could be your opportunity! Secure underground parking, storage locker, in-suite laundry, guest suite & pool. Book your private showing! School Catchment: Cameron Elementary and Seaforth French Immersion Elementary School

KEY INFORMATION

MLS® R2703185

Residential Attached

Sullivan Heights

1 Bedroom

1 Bathroom

825 SF

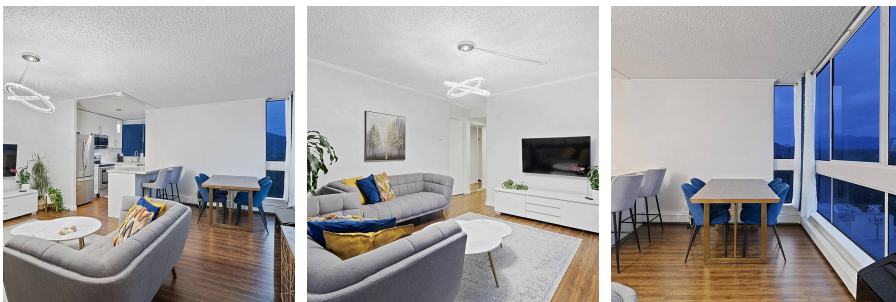
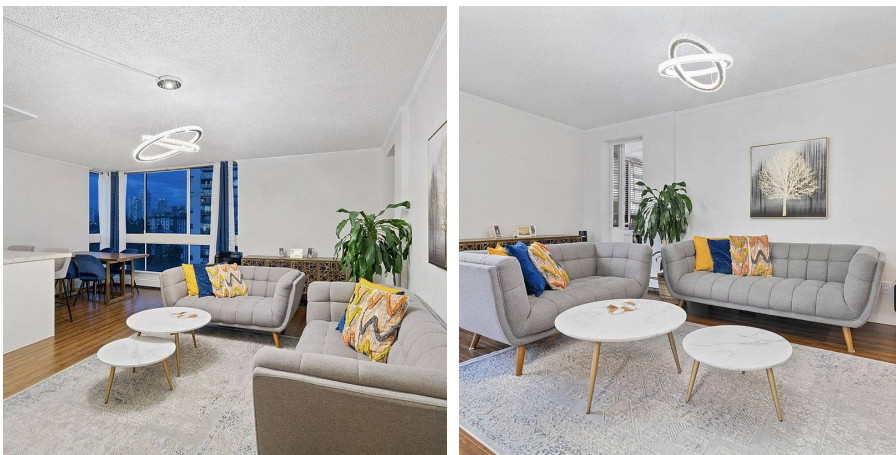
\$285.00 Maintenance Fees

FEATURES

Year Built: 1978

Views: PANORAMIC MOUNTAIN VIEW

Listed By: rennie & associates realty ltd.



Matthew Lee
778.882.2673
mlee@rennie.com
rennie.com/matthewlee

rennie