

# 1743 E 11th Avenue, Vancouver

\$1,888,000



Spacious Vancouver special style duplex on a 33'x127' lot. This southern exposure property is multi-family zoned located in prime Grandview Woodland area. 2 levels with separate entrances, total 2550 sq ft, 6 bedrooms, 4 washrooms, wood burning fireplaces, separate laundry area, Low maintenance metal roof. Double carport with additional parking for 3 more vehicles. Lower floor kitchen cabinet & flooring and washroom have been updated. Recently renovated, new laminate flooring, paint, window coverings, baseboard heaters, and new fridge. Upper level has a large covered back deck 20'x19' - ideal for entertaining! Conveniently located near Commercial Drive with nearby eateries, coffee shops, shopping, transit, schools, community centre, and parks. Tenanted, book appointment to view.

## KEY INFORMATION

MLS® R2703224

Residential Detached

Grandview Woodland

6 Bedrooms

4 Bathrooms

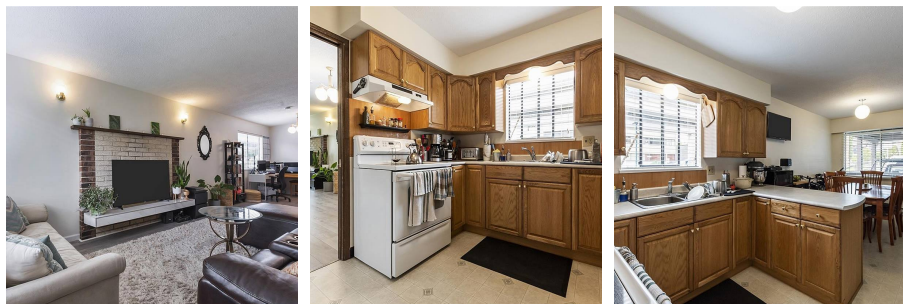
2,550 SF

4,191 SF Lot

## FEATURES

Year Built: 1977

Listed By: RE/MAX City Realty



rennie