

16316 87 Avenue, Surrey

\$1,500,000



Beautifully maintained 3BR 2BTH Fleetwood Meadows rancher. Sitting atop an expansive, corner lot this welcoming home greets you with a spacious living/dining area illuminated by large, picture windows allowing in tons of natural light. Your bright, eat-in kitchen has a built-in pantry & convenient island overlooking the family room so you keep an eye on the kids or your favourite cooking show. The sprawling backyard is an entertainer's dream boasting a massive wooden deck, hot tub & stunning mountain views unique to this home in this neighbourhood. Each bedroom has a sizable closet with main bed offering a full ensuite & outdoor access. Fabulously located steps to Frost Road Elem, Holy Cross RHS, Fresh St Market, future Skytrain station, restaurants & mins to Guildford Town Centre & Hwy 1.

KEY INFORMATION

MLS® R2703305

Residential Detached

Fleetwood Tynehead

3 Bedrooms

2 Bathrooms

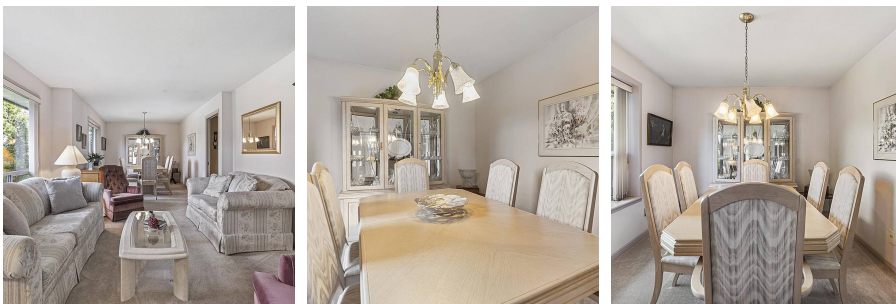
1,738 SF

7,115 SF Lot

FEATURES

Year Built: 1990

Listed By: RE/MAX 2000 Realty



rennie