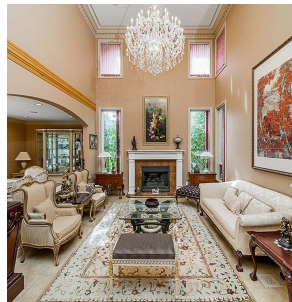
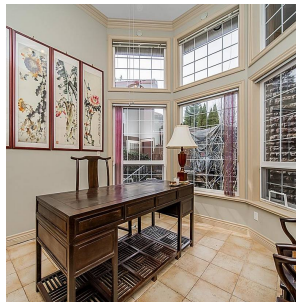
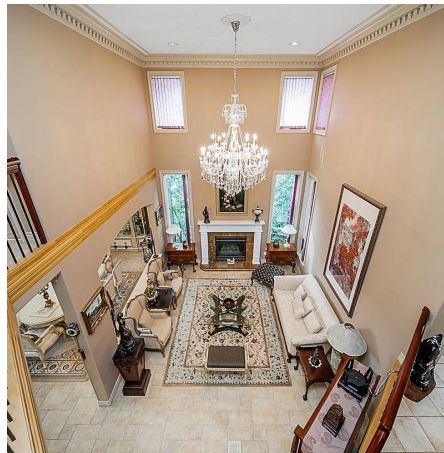


2138 Braeside Place, Coquitlam

\$3,190,000



STUNNING VIEWS! Custom 5800 sqft home at the top of Westwood Plateau - MASSIVE 23,000 sqft corner lot w/ privacy and unlimited views of Mt. Baker - HAVE TO SEE IT TO BELIEVE IT. 6 split levels w/ gorgeous curved staircase overlooking grand living and dining room. Original builder built for own use, expert millworks and high end materials, would be extremely expensive to rebuild today. 4 bedrooms upstairs, each w/ own ensuite! Open kitchen area w/ huge south facing windows, tons of natural light. \$20k Sub-Zero refrigerator, Thermador hood fans. Basement w/ Jacuzzi, sauna, media room. Huge backyard - zen garden w/ koi pond & waterfall. Property line extends to just shy of golf course below.

KEY INFORMATION

MLS® R2703602

Residential Detached

Westwood Plateau

5 Bedrooms

6 Bathrooms

5,807 SF

23,358 SF Lot

FEATURES

Year Built: 2001

Views: MT BAKER, GOLF COURSE

Listed By: RE/MAX Westcoast

rennie