

302 14877 100 Avenue, Surrey

\$599,000



Open design with 3 big bedrooms and open den. Spacious kitchen has lots of cupboards and walk-in pantry. Bright airy living room opens to large south facing balcony. Located in the quiet part of the complex. Bonus 2 parking stalls. Resort like amenities - tennis courts, pools, hot tub, sauna, media room, bike room. TV monitored security cameras and full-time caretaker for peace of mind. Easy walk to schools, Guildford mall, Walmart, T&T Super Market, theatres, parks, library, jogging trails. Built with 2005 rainscreen technology. Short bus ride to sky train. Outstanding community in the best part of Guildford.

KEY INFORMATION

MLS® R2703575

Residential Attached

Guildford

3 Bedrooms

2 Bathrooms

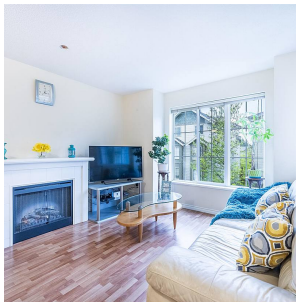
935 SF

\$530.57 Maintenance Fees

FEATURES

Year Built: 2005

Listed By: Nu Stream Realty Inc.



rennie