

408 2940 King George Boulevard, Surrey

\$649,800



Gorgeous TOP floor corner 2 bed/ 2 bath penthouse suite in High Street at South Point! Features SE exposure with large wrap around deck, open concept floor plan with high ceilings, high end finishing, gas stove & S/S appliances. Freshly painted plus \$4,000 decorating allowance. Large bedrooms on opposite sides and a spa inspired ensuite with a large soaker tub and w-i shower! Built by renowned developer Grosvenor Americas, its classic architecture meets modern interiors as created by award-winning firm Rositch Hemphill & Assoc. Conveniently located by boutique shops, groceries, services, cafes & restaurants and public transit steps from your front door. 1 Parking stall & 1 storage locker. Pets & rentals allowed with restrictions, and no age restrictions. Call today before it's too late!

KEY INFORMATION

MLS® R2703484

Residential Attached

King George Corridor

2 Bedrooms

2 Bathrooms

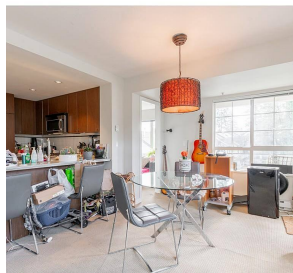
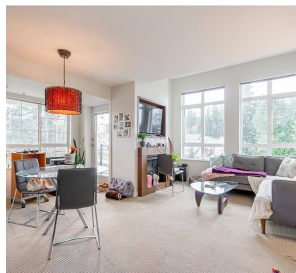
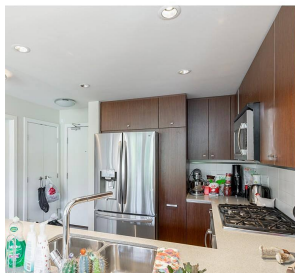
833 SF

\$444.07 Maintenance Fees

FEATURES

Year Built: 2009

Listed By: Sutton Group-West Coast Realty (Surrey/24)



rennie