

333 2279 McCallum Road, Abbotsford

\$230,000



"Alameda Court" is a well-maintained and desirable complex located in the heart of the city. 2 bedrooms one full bath North facing suite with an enclosed balcony and storage plus an additional storage locker. Age-restricted 55 years, rental and pets not allowed. The complex features common facilities large room with a kitchen, exercise room, library and underground secured parking and lots of surface parking. RV/Boat parking. On a transit route for convenience and easy freeway access. Heat and hot water are included in the strata fees.

KEY INFORMATION

MLS® R2703551

Residential Attached

Central Abbotsford

2 Bedrooms

1 Bathroom

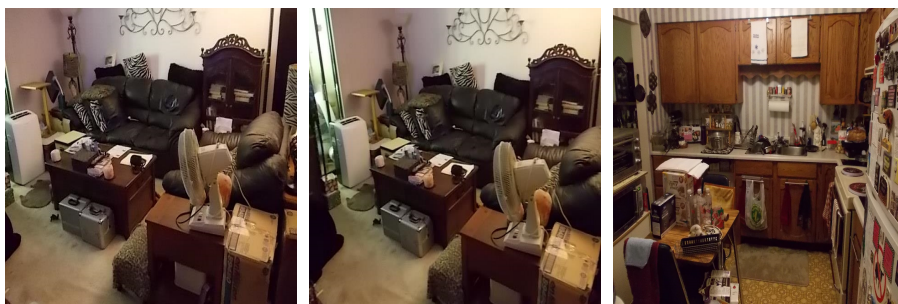
960 SF

\$393.78 Maintenance Fees

FEATURES

Year Built: 1982

Listed By: RE/MAX Little Oak Realty (Abbotsford)



rennie