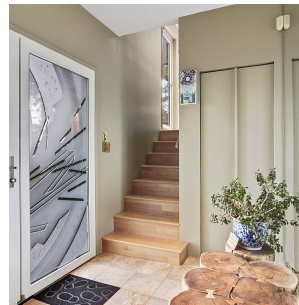


225 Mountain Drive, Lions Bay

\$2,500,000



Wake up on vacation every morning in this architecturally designed West Coast residence w/ SW views of Howe Sound. Perched on a spectacular, private ½ acre forested mountain estate, feel a sense of calmness in your own private forest from the moment you turn onto your country road style driveway. This 3 bdrm+loft masterpiece boasts ocean views on every level, an open floor plan w/ vaulted ceilings, open staircases, skylights & large picture windows that flood the home w/ natural light. The master suite enjoys ocean views, a custom walk-in closet, ensuite & sauna. Enjoy the outdoors on 1 of 4 decks or explore your expansive treed backyard. The lower level features a full height blank canvas prepped for plumb./elect. & ready to be customized to your needs.

KEY INFORMATION

MLS® R2704211

Residential Detached

Lions Bay

4 Bedrooms

3 Bathrooms

2,902 SF

22,433 SF Lot

FEATURES

Year Built: 1979

Views: Ocean View

Listed By: Angell, Hasman & Associates Realty Ltd.

rennie