

# 2304 2232 Douglas Road, Burnaby

\$989,000



Corner unit with amazing views from every angle. Spacious 2 bedrm & den in popular "Affinity" by Bosa. Open concept offers wide open living & entertaining with gourmet kitchen facing sunny westerly views. Bedrooms are at opposite ends, full size SS appliances, granite top thru-out and new laminate floors, mouldings and paint. The higher end fitness facility, social lounge complete with kitchen and entertainment space will keep you busy. This unit is bright and airy and inc two side by side parking stalls and storage locker. All this steps to the New Amazing Brentwood, Skytrain, Whole Foods, Movie Theatre and all the funky shops that Brentwood offers. Call for all details.

## KEY INFORMATION

MLS® R2704290

Residential Attached

Brentwood Park

2 Bedrooms

2 Bathrooms

1,085 SF

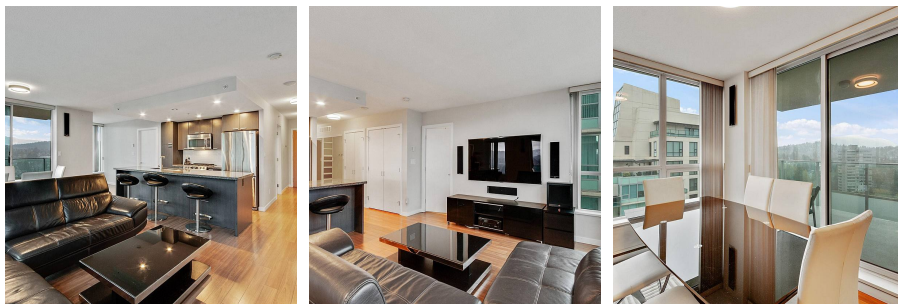
\$401.00 Maintenance Fees

## FEATURES

Year Built: 2011

Views: VIEWS FROM EVERY ROOM

Listed By: RE/MAX Crest Realty



rennie