

112 4800 Spearhead Drive, Whistler

\$1,689,000



The Aspens on Blackcomb is undeniably one of the best ski in ski out locations in Whistler. This rarely available 2 bedroom, 2 bathroom is conveniently located on the ground level just steps to the hill. The complex features a year round outdoor pool, 3 hot tubs, work out room, ski & bike valet and secured underground parking. The unit has an open concept floor plan with large comfortable bedrooms; a king bed in the master and queen plus singles bunks in the second bedroom. The unit has been tastefully updated with quartz kitchen counters, stainless appliances, heated aggregate floors and comes fully furnished and turn key ready for you to use personally or reap the strong revenues! Sit by the fire or on the patio and watch gondolas go! Strata fees include hydro, cable and internet.

KEY INFORMATION

MLS® R2705201

Residential Attached

Benchlands

2 Bedrooms

2 Bathrooms

888 SF

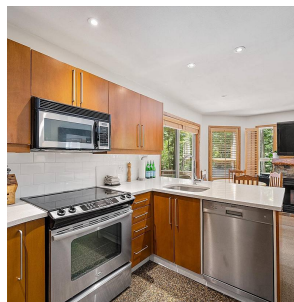
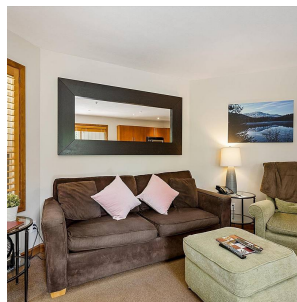
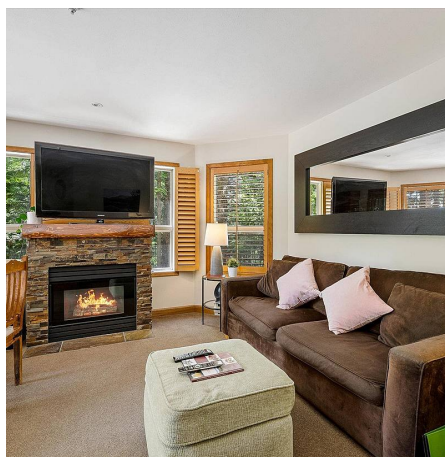
\$764.00 Maintenance Fees

FEATURES

Year Built: 1994

Views: Peak-a-boo of ski hill

Listed By: Engel & Volkers Whistler



rennie