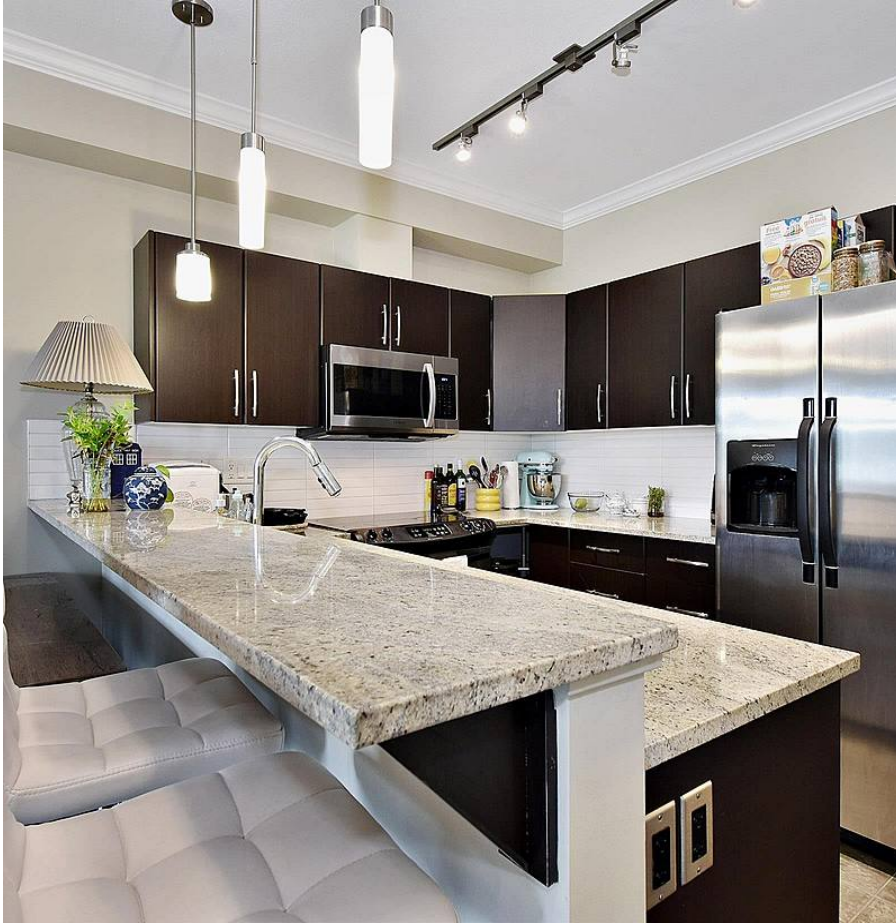


311 2632 Pauline Street, Abbotsford

\$499,900



Yale Crossing in historic Downtown Abbotsford. Walk to everything – shops, services, restaurants, you name it. Stainless appliances, granite counters throughout and an easy-care, wide-open floor plan. Main bedroom with walk-in closet and 5-pc ensuite bath, this unit has everything you need. Secure under-building parking too.

KEY INFORMATION

MLS® R2705277

Residential Attached

Central Abbotsford

2 Bedrooms

2 Bathrooms

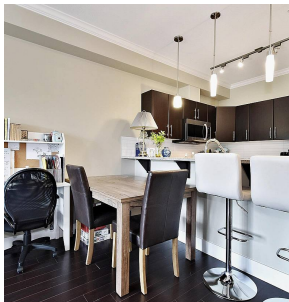
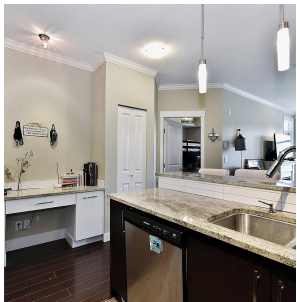
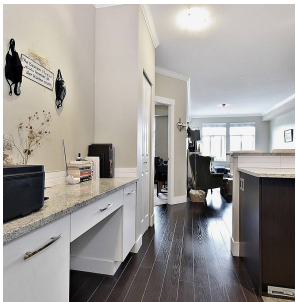
906 SF

\$251.66 Maintenance Fees

FEATURES

Year Built: 2009

Listed By: eXp Realty



rennie