

6 46210 Margaret Avenue, Chilliwack

\$319,500



Are you looking for an affordable retirement opportunity in the well maintained 50+ Capri Apartment building located in the heart of Chilliwack? This unit offers you exactly what you need to enjoy a high quality of life, with no rentals allowed and pets allowed with restrictions. This large 825 sq.ft corner unit features 2 bedrooms, 1 bath and a updated kitchen and lots of windows to allow tons of natural light. Every day you can enjoy a oversized wrap around deck that gives you front row seats to a beautiful sun rise and sun set with clear views of the majestic Mt.Cheam. If you're looking for a building that is located on the edge of the revitalized downtown 1881 district that is footsteps from all amenities then look no further! Come view this unit today and make it your new home.

KEY INFORMATION

MLS® R2705415

Residential Attached

Chilliwack

2 Bedrooms

1 Bathroom

825 SF

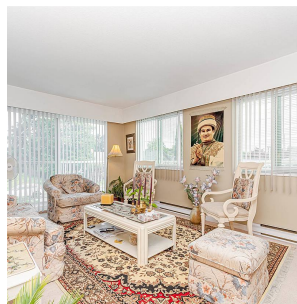
\$1.00 Maintenance Fees

FEATURES

Year Built: 1985

Views: Mt. Cheam

Listed By: Pathway Executives Realty Inc.



rennie