

202 13929 105 Boulevard, Surrey

\$525,000



'PARKER' by Mosaic. Brand new! Bright and Spacious one bedroom corner unit Approx. 625 sq.ft interior with oversized balcony. This amazing unit offers - High ceiling, herring bone pattern flooring, open concept with upgrades of composite stone counter tops, s/s appliances, ensuite laundry window coverings blinds and cozy living room with floor to ceiling windows. Wrap around covered balcony facing the courtyard. Parking stall included. 2-5-10 Warranty. Close to Park, School and Shops. Ready to move in!

KEY INFORMATION

MLS® R2705484

Residential Attached

Whalley

1 Bedroom

1 Bathroom

624 SF

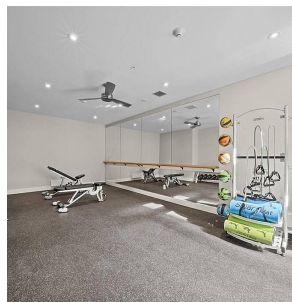
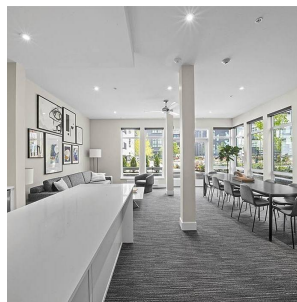
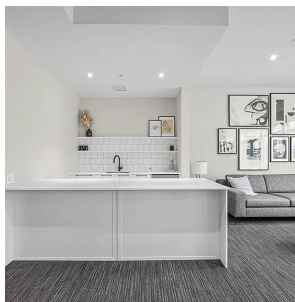
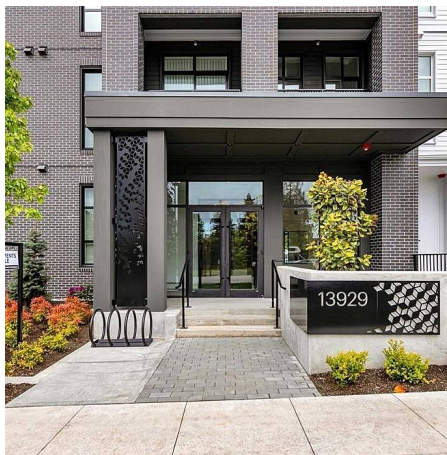
\$283.90 Maintenance Fees

FEATURES

Year Built: 2022

Views: Garden

Listed By: Blue West Realty (Coquitlam) Inc.



rennie