

# 903 3008 Glen Drive, Coquitlam

\$749,900



Rarely available spacious 2 bedroom and 2 bath unit at the M2 by Cressey, perfectly located in the heart of Coquitlam. Well kept unit close to 900 SQF of functional and practical layout with no wasted space and the bedrooms on each side! Walking distance to everywhere- Coquitlam Centre, Skytrain, Pinetree Secondary School, Douglas College, Library, and Community Centre! 1 Parking & 1 locker.

## KEY INFORMATION

MLS® R2705564

Residential Attached

North Coquitlam

2 Bedrooms

2 Bathrooms

866 SF

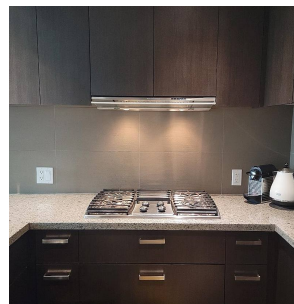
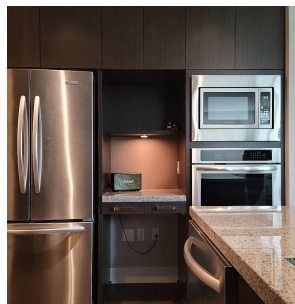
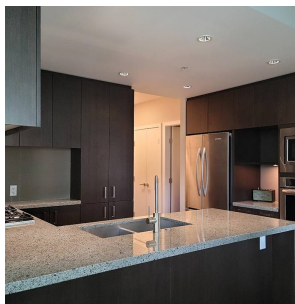
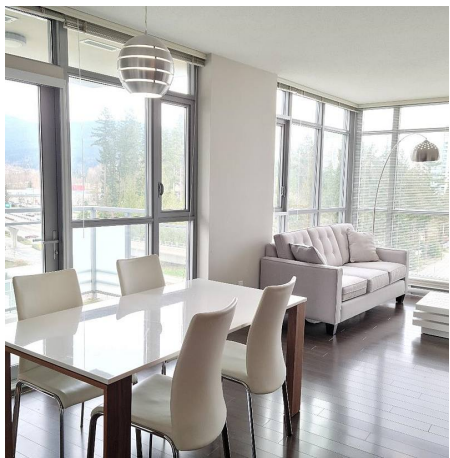
\$346.99 Maintenance Fees

## FEATURES

Year Built: 2013

Views: LAFARGE LAKE PARK VIEW

Listed By: Team 3000 Realty Ltd.



rennie