

306 5450 Empire Drive, Burnaby

\$525,000



Spacious 2 Bedroom 2 Bath CORNER home with stunning Panoramic South and West Views! Tastefully renovated this home features; Stainless Steel Appliances with Ceramic Cook top, Quartz countertops throughout, Laminate flooring, Custom Kitchen cabinetry. This TOP floor South West Corner home offers sprawling views and has a well thought out and open floor plan with plenty of storage space. location places you in walking distance to Recreation, Shops, Schools and Parks. Pets are welcome. Comes with 1 Parking, 1 Storage.

KEY INFORMATION

MLS® R2707760

Residential Attached

Capitol Hill

2 Bedrooms

2 Bathrooms

935 SF

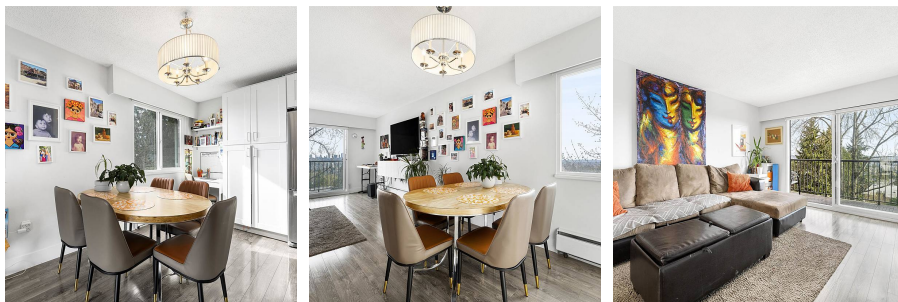
\$476.98 Maintenance Fees

FEATURES

Year Built: 1974

Views: Panoramic South

Listed By: rennie & associates realty ltd.



Lorenzo Daminato PREC*

604.657.8121

ldaminato@rennie.com

rennie.com/lorenzodaminato

rennie