

142 9718 161a Street, Surrey

\$899,900



Welcome the perfect townhome for your kids to roam free! Unit #142 features an expansive "FRONT YARD" and is perfectly situated in this master planned community built by reputable Streetside. Optimal 3 bedroom & 2.5 bath floorplan presents a modern, gourmet kitchen with gas range, spacious balcony convenient for BBQing off of the dining room, 9 ft. ceilings & powder room on the main, full size laundry on upper bedroom floor and wide tandem 2 car garage. This Development features a clubhouse with a gym & playground. Pets and Rentals are welcome with restrictions. 2/5/10 New Home Warranty remains. Short walk to Tynehead Regional Park, Godwin Farm Biodiversity Preserve, Serpentine Heights Elementary and North Surrey Secondary. Call today! OPEN HOUSE, JULY 30/31, SAT/SUN 1-3PM

KEY INFORMATION

MLS® R2713153

Residential Attached

Fleetwood Tynehead

3 Bedrooms

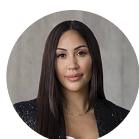
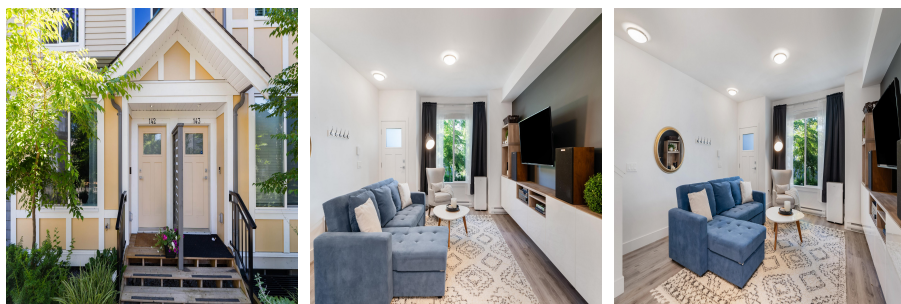
3 Bathrooms

1,410 SF

FEATURES

Year Built: 2019

Listed By: rennie & associates realty ltd.



Irene De Guzman

604.720.1996

ideguzman@rennie.com

rennie.com/irenedeguzman

rennie