

304 2336 Whyte Avenue, Port Coquitlam

\$479,900



Welcome to beautiful CentrepoinTE w/its west coast inspired architecture set against a backdrop of nature. This immaculate west facing 1 BED END UNIT w/9' ceilings, enjoys a quiet outlook from a large covered balcony, a perfect place to relax w/a cool bevvy while eyeing your dinner on the BBQ. The comfortable LR is great for cozy evenings w/a fireplace & DR area. A gracious open kitchen feat. granite counters, breakfast bar seating, SS appliances, smooth top range & adjacent laundry/pantry. Roomy bedroom w/ double closets, ceiling fan, cheater ensuite, eng hardwood thru out, linen closet & 1 parking round out this perfect home. Centrally located - walk to shops & services on Shaughnessy, Coquitlam River, Lions Park & West Coast Express. Solid worry free building w/ low maintenance fees.

KEY INFORMATION

MLS® R2716066

Residential Attached

Central Port Coquitlam

1 Bedroom

1 Bathroom

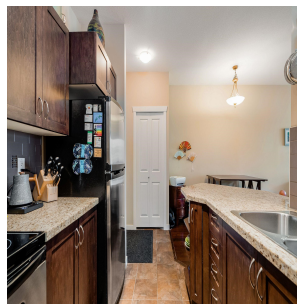
648 SF

\$184.42 Maintenance Fees

FEATURES

Year Built: 2008

Listed By: rennie & associates realty ltd.



Salina Kai PREC*
604.773.7013
skai@rennie.com
rennie.com/salinakai



Danny Chow PREC*
604.765.2469
dchow@rennie.com
rennie.com/dannychow

rennie