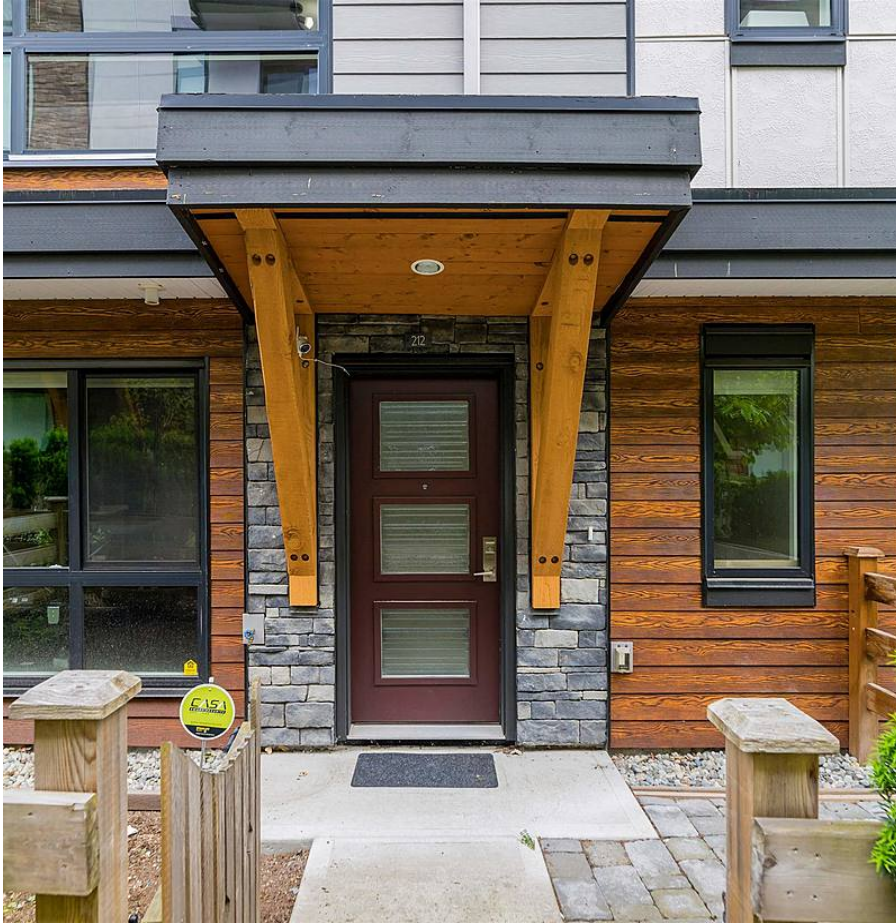


212 16488 64 Avenue, Surrey

\$868,000



Harvest at Bose Farm. Spacious 19ft wide 1600sf floorplan 3 bed 2.5 bath home with side-by-side 2 car garage + flex space. Main floor centre-of-attention kitchen w/ stainless steel appliances, gas stove, wall oven, large island, quartz waterfall counters. Opens to Dining Room and through to the Living room, great for entertaining. Powder room also on main. Traditional 3 bedrms upstairs, large principle bedrm suite w/ensuite closet and bath. Tankless on demand hot water, BBQ gas hookup on deck, and 9 ft ceiling on main and top floor. Daily walks to the 18 acre Bose Forest Park. Close to Cloverdale Athletic Park with Spray Park, Rec Centre, and Northview GC. Short drive to groceries, restaurants, fitness, and to Downtown Cloverdale. Schools are nearby. Please call for your private showing

KEY INFORMATION

MLS® R2718421

Residential Attached

Cloverdale

3 Bedrooms

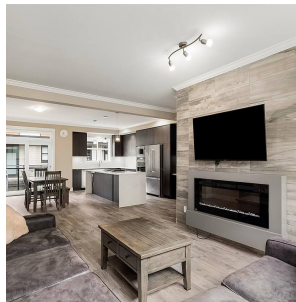
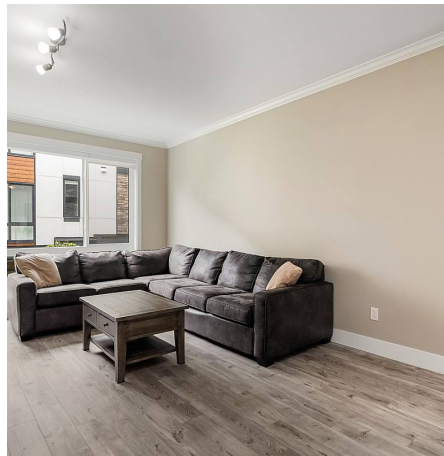
3 Bathrooms

1,594 SF

FEATURES

Year Built: 2017

Listed By: rennie & associates realty ltd.



Howard Don
604.786.9998
hdon@rennie.com
rennie.com/howarddon

rennie