

102 235 E 19th Avenue, Vancouver

\$649,000



Situated on a quiet tree-lined street just steps away from the eclectic Main Street, a vibrant neighbourhood brimming w/convenience & excitement! Complete your grocery run at the array of retailers located within walking distance. No shortage or variety of restaurants & coffee shops! The Newport on Main has been rain-screened & features an exercise centre with all the basics, underground parking & a huge storage locker! This townhome has 1 bed & 1 bath with windows on 3 sides bringing in lots of natural light to your living space! The unit features a gas fireplace with durable laminate flooring in the main living area, roomy entryway, full dining area, kitchen in the heart of the unit, in suite laundry & 2 outdoor patios. Don't let the square footage fool you, it feels so much larger!

KEY INFORMATION

MLS® R2721819

Residential Attached

Main

1 Bedroom

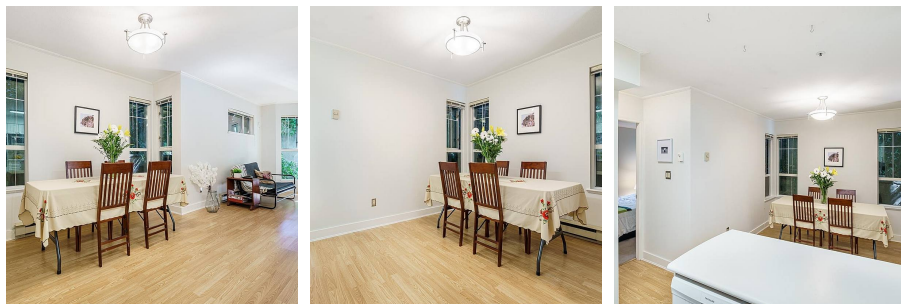
1 Bathroom

610 SF

FEATURES

Year Built: 1994

Listed By: rennie & associates realty ltd.



Ross Leathley
604.802.5468
rleathley@rennie.com
rennie.com/rossleathley

rennie