

# 302 20460 Douglas Crescent, Langley

\$418,000



Exceptionally well maintained 1 bedroom unit at the Serenade in thriving Langley City! This 3rd floor home features lofty ceilings, laminate flooring, quartz countertops, stainless steel appliances, and in suite laundry (newer, front loading washer/dryer). Comes with 1 parking & 1 storage locker. amenities include a gym, clubhouse and bike storage. Prime location, the heart of Downtown Langley, this low rise building offers amazing living. Right by fantastic Douglas Park, restaurants & all the amenities Downtown Langley offers. Also within walking distance to the future Skytrain! Perfect for first time home buyers and investors alike. Rentals & Pets allowed! (\*Photos are of the unit a floor below. Although it's the exact same layout/finishes, there may be slight differences.)

## KEY INFORMATION

MLS® R2722501

Residential Attached

Langley City

1 Bedroom

1 Bathroom

613 SF

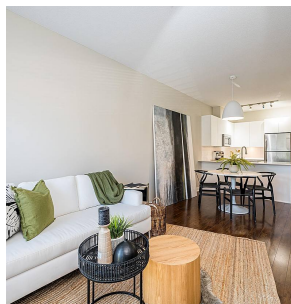
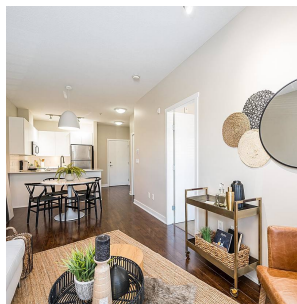
\$318.30 Maintenance Fees

## FEATURES

Year Built: 2011

Views: City & Mountain

Listed By: rennie & associates realty ltd.



**Homer Reyes**  
604.374.1486  
hreyes@rennie.com  
rennie.com/homerreyes

**rennie**