

1910 5665 Boundary Road, Vancouver

\$549,900



A downtown lifestyle without the downtown price. The popular A1 plan at Wall Centre Central Park is now available. This cute 1 bedroom + flex comes with parking and offers fabulous western exposure with a balcony on the quiet side of the building. A sleek kitchen with top of line SS appliances provides the home chef with a Porter and Charles gas range, stone counters, task lighting and plenty of storage. Enjoy your first class amenities in the building with 60 ft lap pool, hot tub, gym, meeting room and a rooftop skybridge with play, lounge and garden areas. This central location is an easy walk to Joyce Skytrain, Central Park, Starbucks, hot yoga, neighbourhood eats or quick access to major arterial routes and Metrotown. Bring your furry roommate and short term rentals are OK.

KEY INFORMATION

MLS® R2722613

Residential Attached

Collingwood

1 Bedroom

1 Bathroom

479 SF

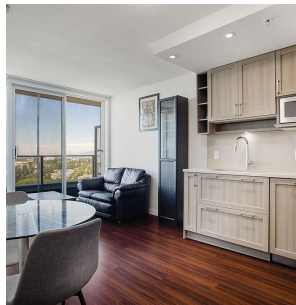
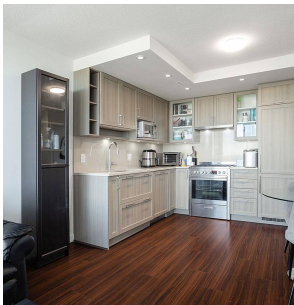
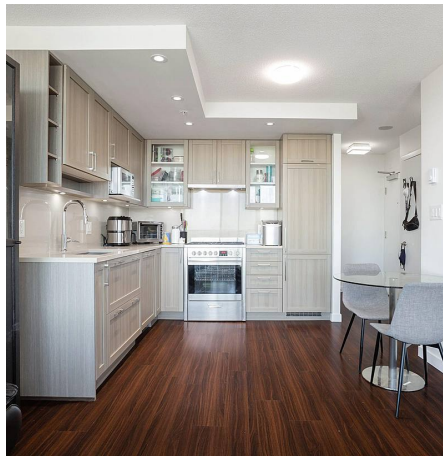
\$297.93 Maintenance Fees

FEATURES

Year Built: 2017

Views: Panoramic City and Mountain

Listed By: rennie & associates realty ltd.



Salina Kai PREC*
604.773.7013
skai@rennie.com
rennie.com/salinakai



Danny Chow PREC*
604.765.2469
dchow@rennie.com
rennie.com/dannychow

rennie