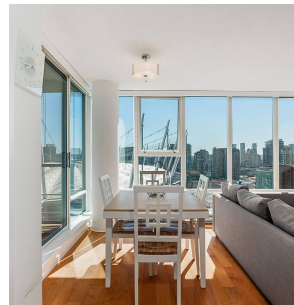
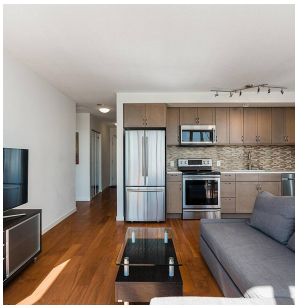
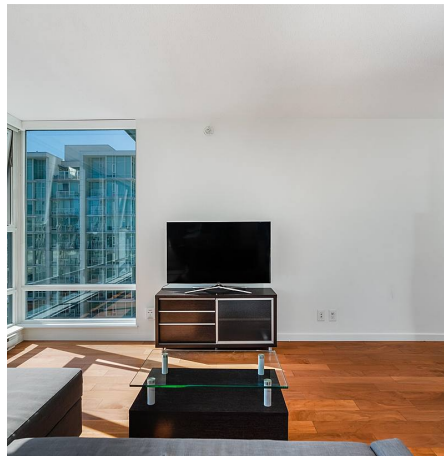
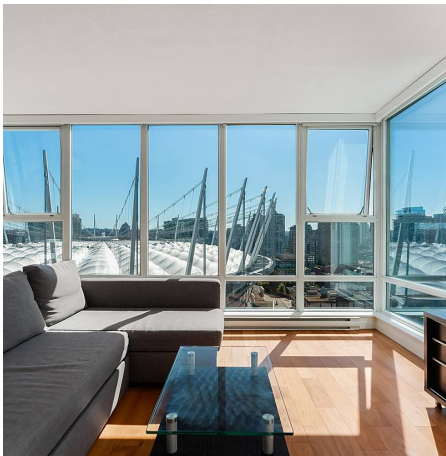


# 2210 668 Citadel Parade, Vancouver

\$950,000



Welcome to Spectrum 2 by Concord Pacific – Centrally located in the heart of Downtown. This SE corner 2 Bedroom + Den/Office unit offers 940 sqft of living space, bright and spacious layout, floor to ceiling windows, laminate flooring, separated bedrooms, den with windows perfect as an office to work from home and a balcony to enjoy the beautiful open city views. Residents have exclusive access to the World Class amenities at Club Ozone with indoor pool, sauna, steam room, fitness centre, party room, 24 hours concierge. Conveniently located, steps to Yaletown, False Creek, Seawall, Science World, BC Place, Rogers Arena, TNT, Costco, Skytrain, Olympic Village, Library, Downtown Vancouver, shopping, restaurants, cafes and more!

## KEY INFORMATION

MLS® R2722661

Residential Attached

Downtown

2 Bedrooms

2 Bathrooms

940 SF

\$536.05 Maintenance Fees

## FEATURES

Year Built: 2007

Views: City & Stadium

Listed By: rennie & associates realty ltd.



**Ryan Wong** PREC\*  
604.551.7966  
rwong@rennie.com  
rennie.com/ryanwong

**rennie**