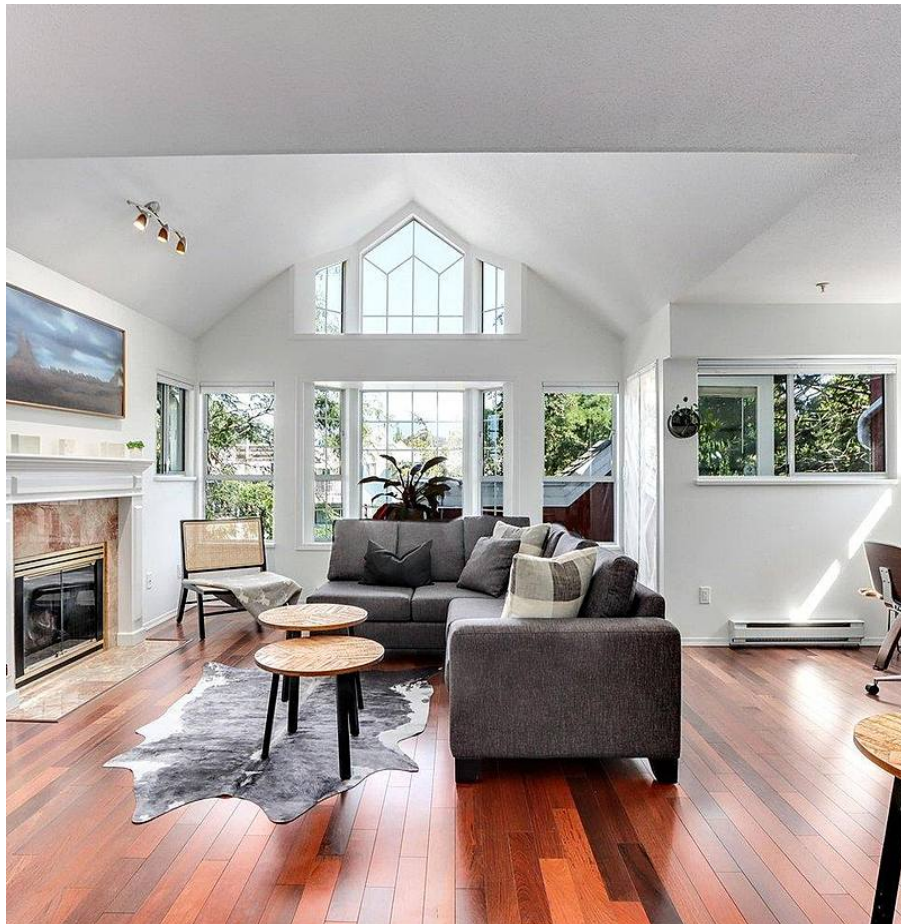


401 1610 E 5th Avenue, Vancouver

\$1,049,000



Exceptionally Rare Penthouse home near The Drive. Enjoy sunshine & light throughout this spacious 1055 sq ft, 2 bed 2 bath home. Feel perched on top of the trees & enjoy a huge upper living area, vaulted ceilings, wrap-around windows, mountain views & a private patio to garden or just relax. One of the very best locations near Commercial Drive to access all shops, coffee, food & skytrain, while at the same time enjoying a very quiet tree lined street just a block away from all the action! This boutique building has 10 total suites & only 2 on this top level. Other highlights include hardwood flooring throughout, large bedrooms, gas fireplace, pet friendly, rentals ok,+ parking & storage. Proactive strata & a positive history. Easy to show and view ... call your Realtor for showings!

KEY INFORMATION

MLS® R2723653

Residential Attached

Grandview Woodland

2 Bedrooms

2 Bathrooms

1,055 SF

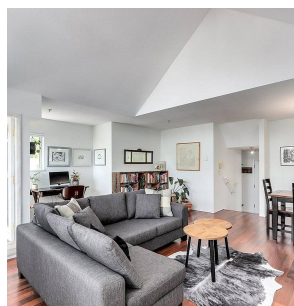
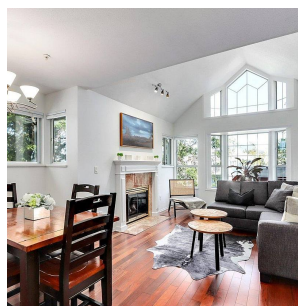
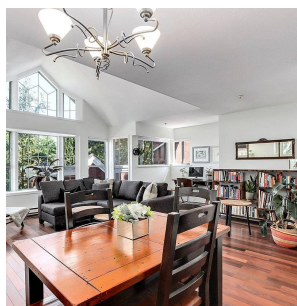
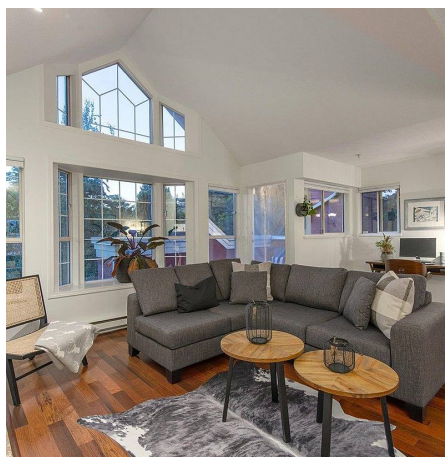
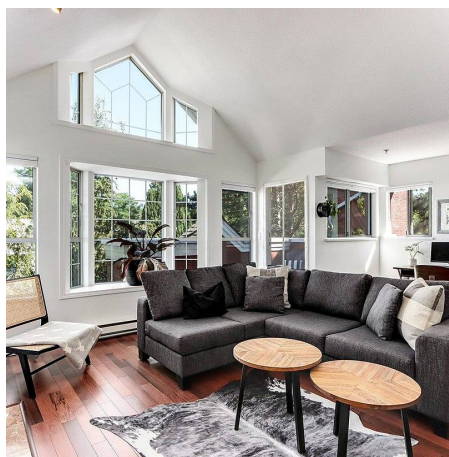
\$694.15 Maintenance Fees

FEATURES

Year Built: 1991

Views: Mountains

Listed By: rennie & associates realty ltd.



Samson Danniels

778.989.2454

sdanniels@rennie.com

rennie.com/samsondanniels

rennie