

1509 2220 Kingsway, Vancouver

\$799,900



Panoramic mountain & city views in this 2 bed, 2 bath + flex home at the Iconic Kensington Gardens by Westbank! Located on the quiet side and on the southeast corner, this home features a quiet and bright outlook, receiving amble morning & afternoon sun indoor/ outdoor. This 880 sqft home features over height ceilings, central air conditioning, lots of windows, a gas cooktop, timeless millwork & finishes, a 100sqft outdoor patio and 1 parking! Bonus: strata fees cover central AC in the summertime and heating/ gas in the winter. You'll have access to the best amenities in the neighbourhood including an outdoor swimming pool, hot tub, gym, meeting rooms, study rooms, concierge, and more. T&T, restaurants, cafes, & transit conveniently located outside your doorsteps. Open House Sept 25 @ 2-4PM

KEY INFORMATION

MLS® R2724709

Residential Attached

Victoria

2 Bedrooms

2 Bathrooms

880 SF

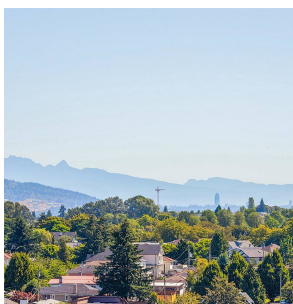
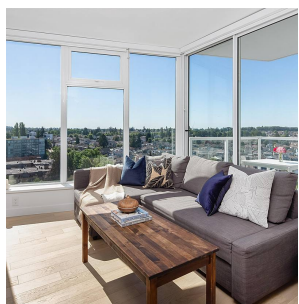
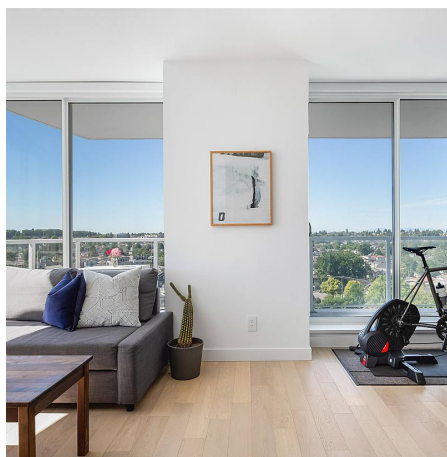
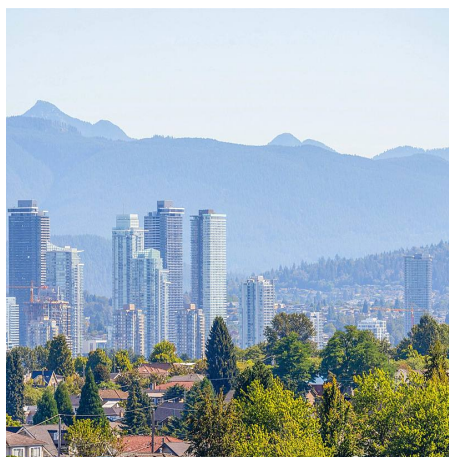
\$609.34 Maintenance Fees

FEATURES

Year Built: 2018

Views: Mountain Views

Listed By: rennie & associates realty ltd.



Jane Chu PREC*
778.886.3303
janechu@rennie.com
rennie.com/janechu

rennie