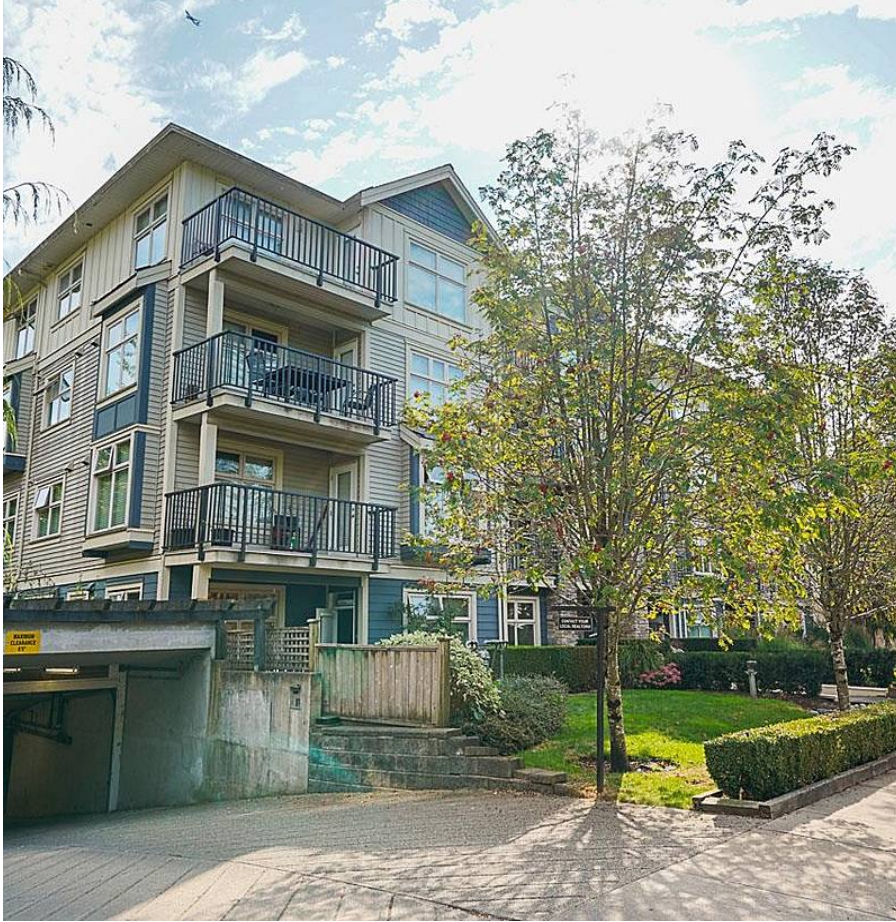


# 211 8084 120a Street, Surrey

\$650,000



Welcome to Eclipse. You must see this bright and very private corner unit of 3 bedroom 2 bathroom with 964sqft. Crown moulding throughout, the dining & living rooms covered in laminate flooring, and carpets in the bedrooms. Huge balcony overlooking green space. Gourmet kitchen featuring stainless steel appliances, granite countertops, maple cabinets and breakfast bar. Gated underground garage with 2 park stalls and a storage locker allocated to this unit. Amenities include party room, playground, bike storage and carwash area. Steps away to transit, schools, shopping, grocery & restaurants. Brand new range top microwave, dryer and garburator. This home is move in ready!

## KEY INFORMATION

MLS® R2725820

Residential Attached

Queen Mary Park

3 Bedrooms

2 Bathrooms

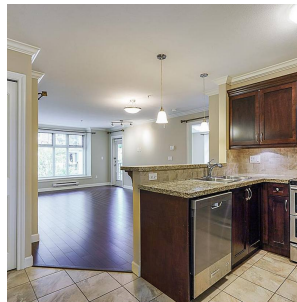
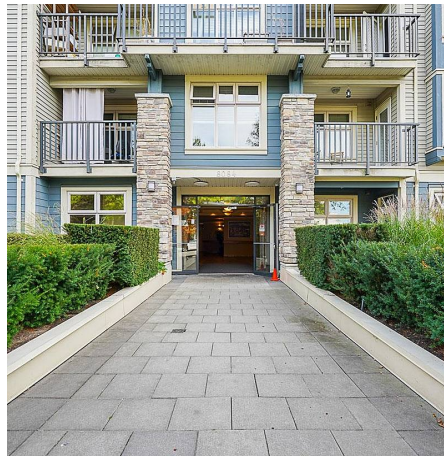
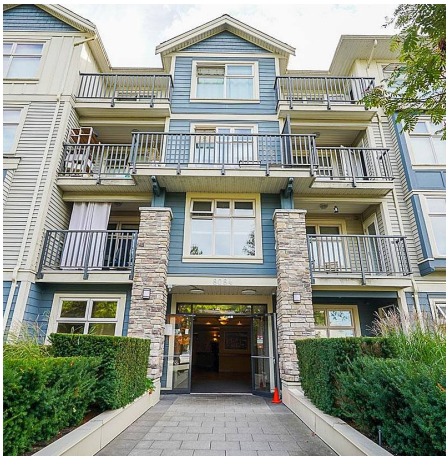
964 SF

\$344.96 Maintenance Fees

## FEATURES

Year Built: 2008

Listed By: Sutton Group-Alliance R.E.S.



rennie