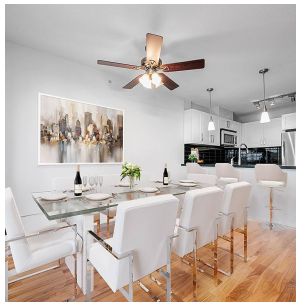
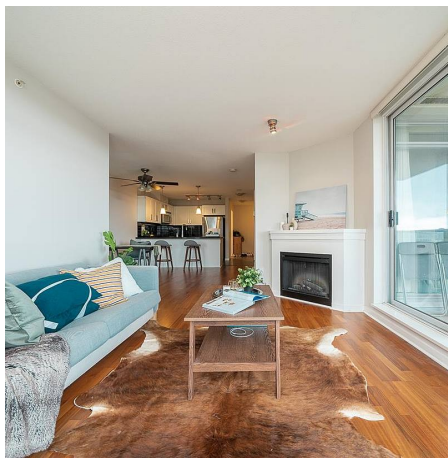


# 909 2133 Douglas Road, Burnaby

\$749,900



Welcome to Perspectives built by reputable Ledingham McAllister situated in heart of Brentwood community. This well-maintained southwest facing unit offers a bright open floor plan with upgraded hardwood floor, new painting throughout, spacious living room & dining area with unobstructed gorgeous city and park view, large kitchen with entertaining island, s/s appliances, quartz countertops, 2 bed + 2 full bath to fulfill all your family's needs, master bedroom comes with its own ensuite and walk in closet. Amenities including gym/party room/social lounge/landscaped terraces. 1 parking+1 locker included. Steps to Skytrain, Brentwood mall, Wholefoods, restaurants, parks, schools and more!.

## KEY INFORMATION

MLS® R2728659

Residential Attached

Brentwood Park

2 Bedrooms

2 Bathrooms

883 SF

\$399.05 Maintenance Fees

## FEATURES

Year Built: 2012

Views: City and Park

Listed By: rennie & associates realty ltd.



**Shelly Vellani** PREC\*

604.710.3681

svellani@rennie.com

rennie.com/shellyvellani

**rennie**