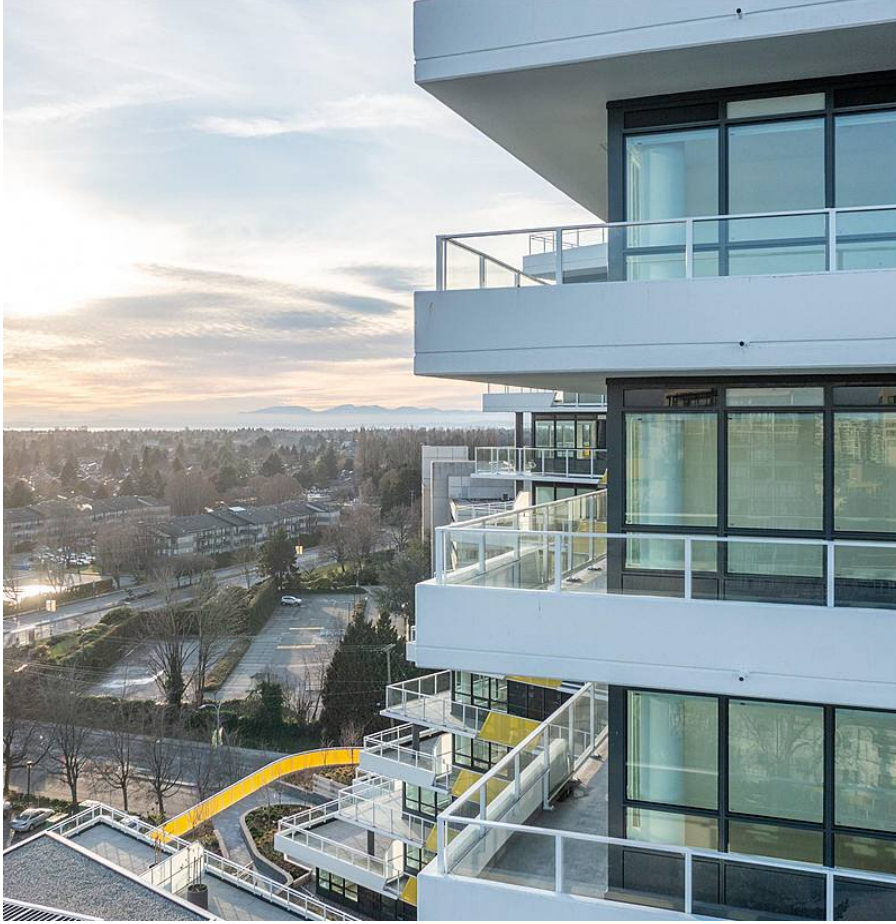


1506 5766 Gilbert Road, Richmond

\$959,900



North East corner home with mountain views in Richmond's most iconic building, CASCADE CITY by Landa Global, designed by renowned Rafii Architects & Arno Matis. Bright, open layout with plenty of windows for natural light, over 260 SF wrap-around patio; A/C, Miele appliance package + engineered hardwood floors throughout. Surrounded by restaurants, shops and services. Richmond Centre, Aberdeen Centre + YVR airport all a short drive away! Easy to get downtown w/Canada Line nearby. Amenities incl exclusive 3,000 SF double height fitness centre, guest suite, multi functional Club Lounge, lushly landscaped 25,000 SF podium level outdoor space + much more! Parking and storage included! Ready to move in!

KEY INFORMATION

MLS® R2729850

Residential Attached

Brighthouse

2 Bedrooms

2 Bathrooms

826 SF

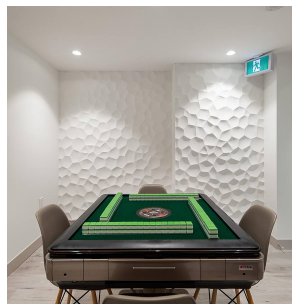
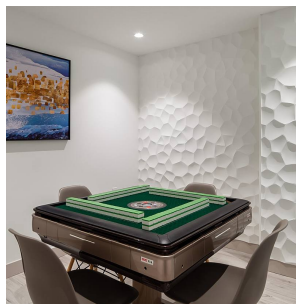
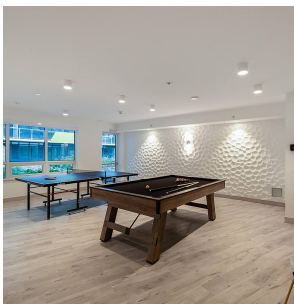
\$471.29 Maintenance Fees

FEATURES

Year Built: 2022

Views: MOUNTAIN

Listed By: rennie & associates realty ltd.



Hanson Lu PREC*
604.787.2578
hlu@rennie.com
rennie.com/hansonlu



Jessica Lozada PREC*
604.360.0025
jlozada@rennie.com
rennie.com/jessicalozada

rennie