

# 3001 7088 Salisbury Avenue, Burnaby

\$1,280,000



High-Gate Village Built by Bosa! This Rarely find Sub Penthouse with Panoramic 270 degree of City, River and North Shore Mountain view! This home is well maintained by one family over last ten years. Excellent Floor-plan with 9 feet high ceiling. This home features lots windows with natural lighting, Open concept kitchen, stainless appliances, Engineer Hardwood floor, Huge living room, 3 Bedrooms and 3 bathrooms. 2 of bedrooms are Ensuite, and two large Balconies. Amenities includes Gym, Lounge, Hot-tub, garden and playground. This building is steps away from village shopping centre, all the banks, restaurants, parks, Edmond community centre and much more. Short walk to skytrain station. 2 Parking and 1 Locker.

## KEY INFORMATION

MLS® R2730675

Residential Attached

Highgate

3 Bedrooms

3 Bathrooms

1,598 SF

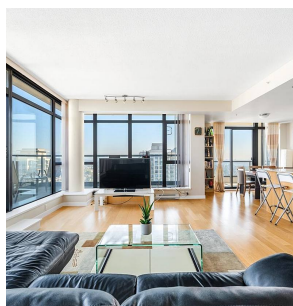
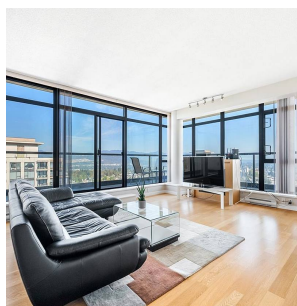
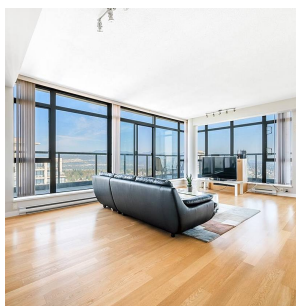
\$646.74 Maintenance Fees

## FEATURES

Year Built: 2008

Views: unobstructed view

Listed By: rennie & associates realty ltd.



**Vivien Ma** PREC\*  
604.828.2268  
vma@rennie.com  
rennie.com/vivienma

**rennie**