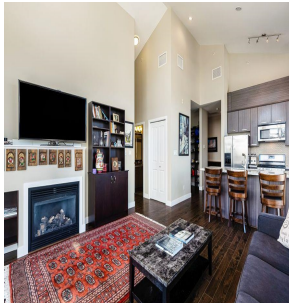
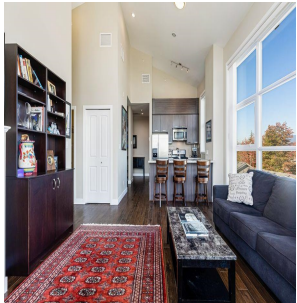


405 3255 Smith Avenue, Burnaby

\$1,048,000



Welcome to Panacasa, a rare low rise concrete building. This beautiful top floor semi-penthouse features 2 bedrooms plus den, 2 bathrooms with high vaulted ceiling and a large open and bright layout! Very central location, close to transit, shops, malls, restaurants, parks, highway access, schools and walking distance to BCIT. Features include granite countertops, air conditioning, engineered hickory hardwood floors, designer paint, quality custom wood cabinetry, all stainless-steel appliances and more! Large patio great for BBQ and entertainment space where you can enjoy beautiful mountain and city views! Complex also includes gym & amenity room, courtyard with playground, bike room and visitors parking. Very rare 3 parking stall plus large storage locker.

KEY INFORMATION

MLS® R2731179

Residential Attached

Central Burnaby

2 Bedrooms

2 Bathrooms

1,075 SF

\$490.00 Maintenance Fees

FEATURES

Year Built: 2012

Views: Mountain and City

Listed By: rennie & associates realty ltd.



Vivien Ma PREC*
604.828.2268
vma@rennie.com
rennie.com/vivienma

rennie