

606 8940 University Crescent, Burnaby

\$733,800



Come see this Beautiful 2 bedroom and 2 bath unit by Intergulf's Terraces at the Peak. This spacious, centrally located at SFU, South facing unit has great natural light and has an open floor plan. Enjoy the well appointed kitchen with stainless steel appliances, gas range, quartz countertops, perfect for entertaining. Building amenities include an expansive outdoor entertainment space with BBQ, fully equipped gym and fitness room, and a gorgeous social lounge. Central location steps to SFU, bus loop, schools, restaurants, shops, parks and more. 1 parking and 1 storage locker included.

KEY INFORMATION

MLS® R2736227

Residential Attached

Simon Fraser University

2 Bedrooms

2 Bathrooms

890 SF

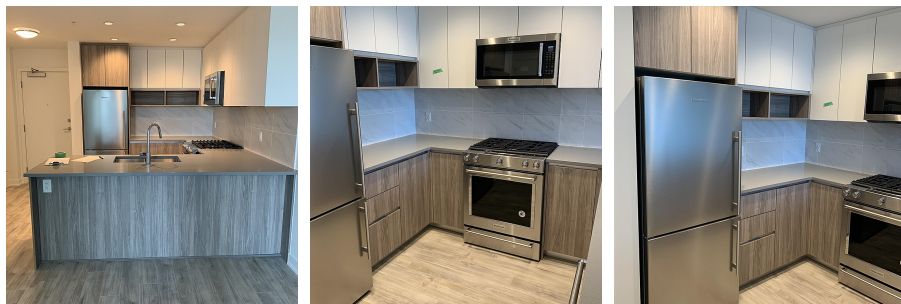
\$439.92 Maintenance Fees

FEATURES

Year Built: 2021

Views: CITY VIEWS

Listed By: Royal Pacific Realty Corp.



rennie