

# 2050 Jordan Drive, Burnaby

\$1,999,000



FULLY RENOVATED home in the sought-after Park Crest neighborhood of North Burnaby. Spacious 2-level home with separate entrance into the basement. IMMACULATE FINISHING throughout with no expense spared. Open concept layout, Engineered Hardwood Flooring, New LED Fixtures, A/C, Glass Railings, Security System, Gas Range Stove, Radiant Heating Floors, Gas Hook-up for BBQ, Gas Fireplace, Roughed-in Plumbing too add second kitchen. City & Mountain Views! Walking distance to Schools, Parks, Shopping, Transit & MORE!

## KEY INFORMATION

MLS® R2738437

Residential Detached

Parkcrest

6 Bedrooms

4 Bathrooms

2,509 SF

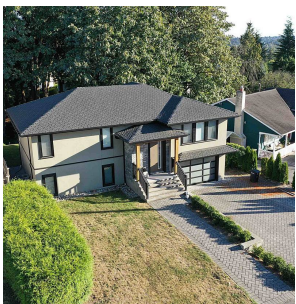
7,467 SF Lot

## FEATURES

Year Built: 1970

Views: City & Mountain

Listed By: rennie & associates realty ltd.



**Art Seroff** PREC\*  
778.223.0033  
aseroff@rennie.com  
rennie.com/artseroff

**rennie**