

3110 5470 Ormidale Street, Vancouver

\$555,000



We are proud to present #3110 at Wall Centre Central Park. A one-of-a-kind view overlooking two skylines; Metrotown and Brentwood, SFU Mountain and endless greenery. Bright and spacious, this 1 Bedroom + Den offers one of the best layouts in the building, featuring numerous built-ins including a media centre in the living room and storage in the bedroom. Your sanctuary in the city, with a gourmet kitchen, quartz countertops and backsplash. S/S appliances including a full-sized gas stove. 1 Parking + 1 Extra Large Locker. Perfectly situated, walking distance to Joyce Skytrain Station, only 1 bus to UBC, and 1 station away from Metrotown and Crystal Mall. 2-5-10 Warranty included. Open House Dec 4th, 2 - 4pm.

KEY INFORMATION

MLS® R2741190

Residential Attached

Collingwood

1 Bedroom

1 Bathroom

504 SF

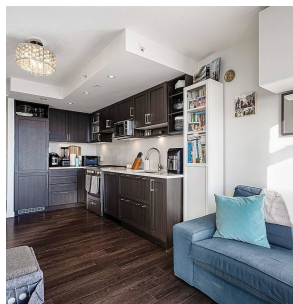
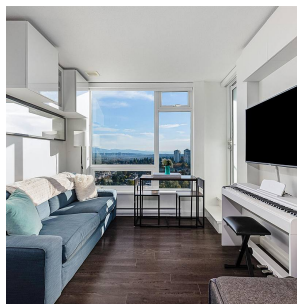
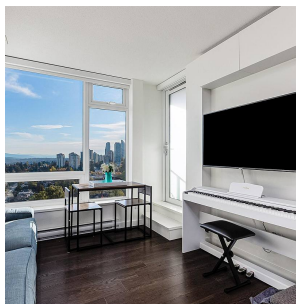
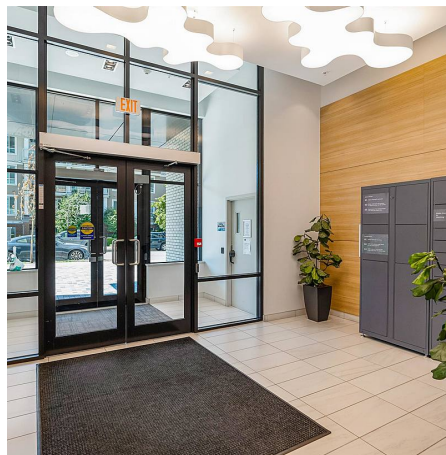
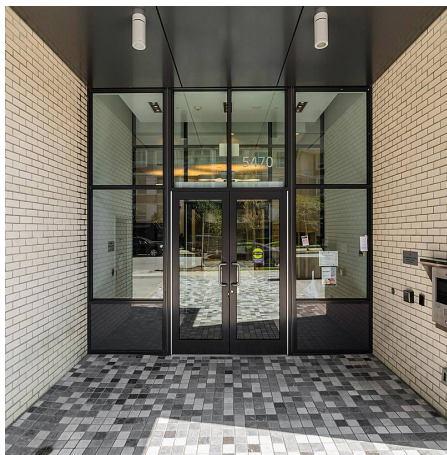
\$255.38 Maintenance Fees

FEATURES

Year Built: 2018

Views: Beautiful SFU Mountain & City

Listed By: rennie & associates realty ltd.



Daniel Lee
604.910.3931
dlee@rennie.com
rennie.com/daniellee

rennie