

1009 5740 Minoru Boulevard, Richmond

\$634,900



"Minoru Square," a master-plan mixed-use development located in the centre of Lansdowne with 4 min walk from the Lansdowne Skytrain Station & No. 3 Road. At this prime location you have easy access to Lansdowne, Richmond Centre and Aberdeen shopping malls, top rated restaurants & Minoru Park. 24-concierge service in the building & 36,000 sqft indoor/outdoor amenities with fully equipped gym, yoga and exercise room, cocktail lounge, tea room, co-working space, outdoor BBQ and fire pits. This 1 bedroom home is facing east in Tower C (13-storey) comes with A/C, the kitchen is equipped with top-notch 24" MIELE appliances & bathroom comes with medicine cabinet, KOHLER fixtures & porcelain tiles throughout. 1 Parking 1 Bike Locker! Book your private experience at our Sales Gallery today!

KEY INFORMATION

MLS® R2741581

Residential Attached

Brighthouse

1 Bedroom

1 Bathroom

502 SF

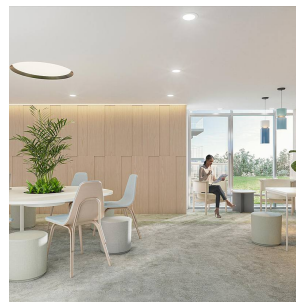
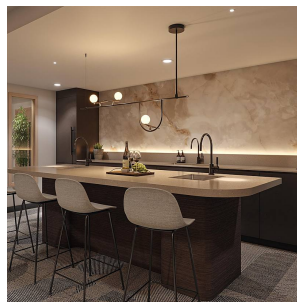
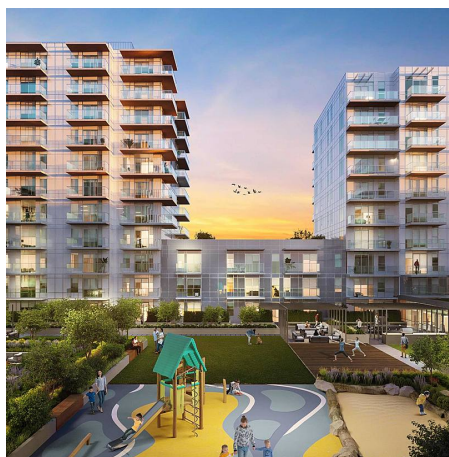
\$369.27 Maintenance Fees

FEATURES

Year Built: 2026

Views: Sunrise & Mountain Views

Listed By: rennie & associates realty ltd.



Ester Hsieh PREC*
778.552.4921
ehsieh@rennie.com
rennie.com/esterhsieh

rennie