

602 3335 Cypress Place, West Vancouver

\$1,549,000



Suite 602 Stonecliff located at the foot of Cypress Mtn. Offering picturesque ocean & city views from all major rooms. A spacious, bright south facing, 2 bed 2 bath & den/family room 1577 sq. ft open floor plan. Features include: hardwood floors, entertaining size kitchen with stainless steel appliances, gas fireplace, custom millwork, spa inspired ensuite bathroom, in suite laundry, AC, large private deck, secure double garage. Fantastic amenities: clubhouse, fireplace lounge, gym, hot tub and 2 guest suites and onsite resident manager. Close to top ranking IB schools: West Bay Elementary & Mulgrave School. Minutes to Park Royal shopping, Ambleside, Dunderave, Skiing & Hiking. Appointment Only

KEY INFORMATION

MLS® R2743361

Residential Attached

Cypress Park Estates

2 Bedrooms

2 Bathrooms

1,577 SF

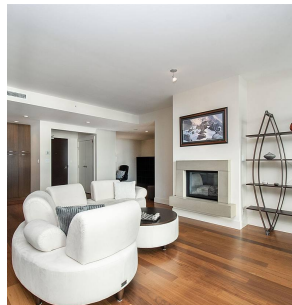
\$898.12 Maintenance Fees

FEATURES

Year Built: 2005

Views: Panoramic City & Ocean

Listed By: rennie & associates realty ltd.



Karim Kamrani

604.789.6461

kkamrani@rennie.com

rennie.com/karimkamrani

rennie