

1011 285 E 10th Avenue, Vancouver

\$899,900



UNOBSTRUCTED VIEWS AT THE INDEPENDENT IN MOUNT PLEASANT - 2 BED - Views will be hard to beat - Features Modern interiors with custom millwork, laminate flooring, custom designed & crafted millwork RizeModular storage solution in many homes. Kitchens include Italian cabinetry, stainless steel appliance package with Porter & Charles induction cooktops. With a half acre "backyard" and 3,300 sq.ft. of indoor amenity space, this will be a fabulous place to call home. located in the heart of Mount Pleasant, a highly walkable neighbourhood, steps from vibrant Main St. shopping, dining, and major public transit routes (10 min. walk to SkyTrain). Come see for yourself today! 1 LARGE PARKING + 1 LARGE LOCKER.

KEY INFORMATION

MLS® R2744699

Residential Attached

Mount Pleasant

2 Bedrooms

1 Bathroom

648 SF

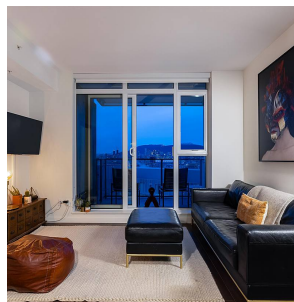
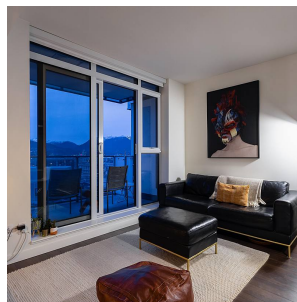
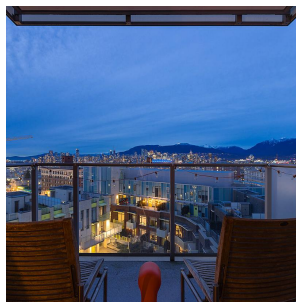
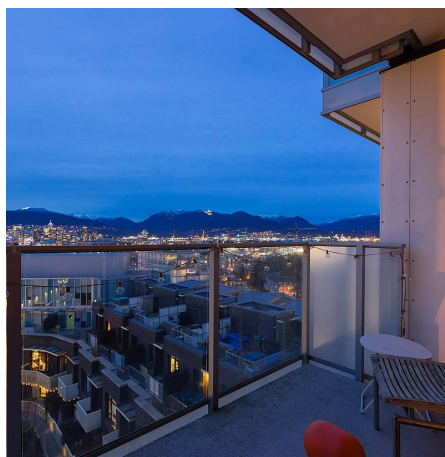
\$440.63 Maintenance Fees

FEATURES

Year Built: 2019

Views: Amazing City Mountains & Water

Listed By: rennie & associates realty ltd.



Calvin Kan PREC*
604.616.8373
ckan@rennie.com
rennie.com/calvinkan

rennie