

2 1891 Marine Drive, West Vancouver

\$1,249,000



PARKVIEW PLACE: experience easy-living with this 1st floor, 1 level walk-out that is close to everything. On the quiet WESTERN side of the boutique, concrete building, the 2 bed unit boasts floor-to-ceiling windows, spacious living areas with H/W floors, crown moldings, a gas F/P, vaulted ceilings, radiant in-floor heating and Wolf, Bosch & Sub- Zero appliances. Walk to all Ambleside amenities including groceries, doctor/dentist, cafes, WV Library, WV Rec Centre. Heat, hot water & gas all included in strata fee. Secured underground parking & storage locker. Unit looks on to Memorial Park and is just 1 block from the seawall! A condo that feels more like a townhouse.

KEY INFORMATION

MLS® R2744825

Residential Attached

Ambleside

2 Bedrooms

2 Bathrooms

1,019 SF

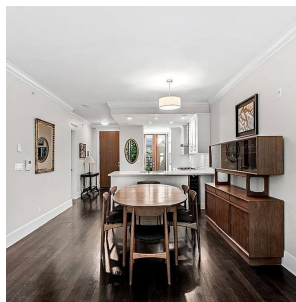
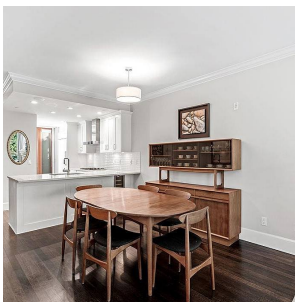
\$940.44 Maintenance Fees

FEATURES

Year Built: 2010

Views: Greenbelt/Park

Listed By: rennie & associates realty ltd.



Shannon Pickering

604.812.1887

spickering@rennie.com

rennie.com/shannonpickering

rennie